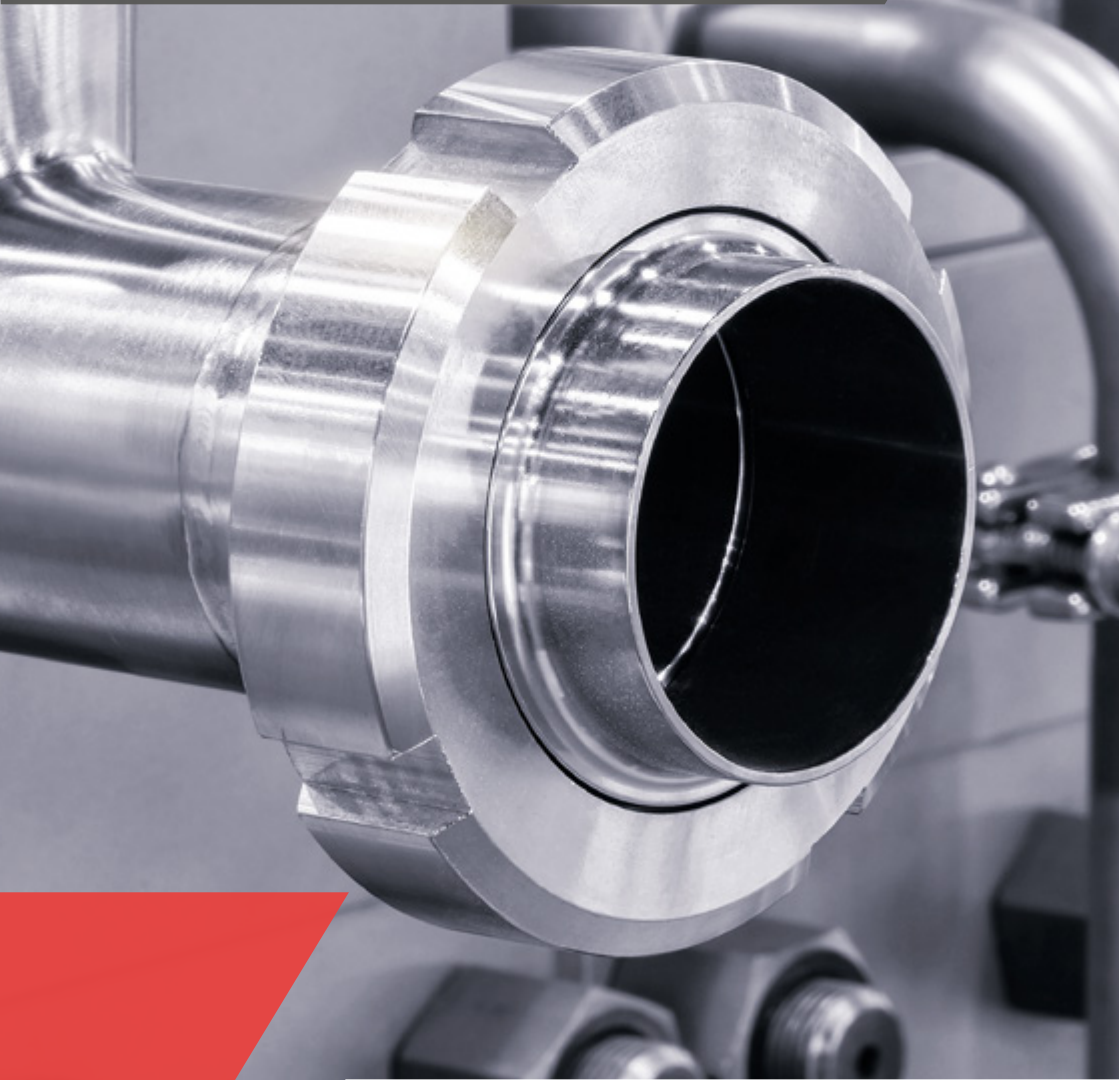


Productcatalogus





Inhoudsopgave

Koppelingen	05
Zuivelkoppelingen DIN 11851	06
Complete koppelingen	06
Draadstukken	08
Puntstukken	18
Wartelmoeren	28
Melkkoppeling afdichtingen	34
DIN 11864	39
Melkkoppelingen	39
Flenskoppelingen	46
Clampkoppelingen	56
DIN 11853	66
Melkkoppelingen	66
Flenskoppelingen	73
Clampkoppelingen	81
Tri-clamp koppelingen	90
Lasferrules	90
Adapters	95
Klembanden	98
TC-blindplaten	100
Afdichtingen	101
Kijkglazen	103
Lasfittingen	105
Bochten	106
45° Lasbochten	106
90° Lasbochten	108
45° Walsbochten	110
90° Walsbochten	112

Inhoudsopgave

T-stukken	114
T-stuk lang	114
T-stuk kort	116
Kort reducerend	117
Reduceerstukken	120
Concentrisch Lasverloop	120
Excentrisch Lasverloop	122
Buis	123
Zuivelbuis	124
Montage toebehoren	127
Pijpbeugels	128
MQ-Line zonder stift	128
MQ-Line met stift	129

Koppelingen

Zuivelkoppelingen DIN 11851 06

Koppelingen DIN 11864 39

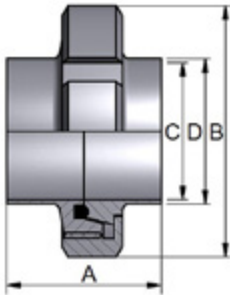
Koppelingen DIN 11853 66

Tri-clamp koppelingen 90



Complete koppelingen

Complete Melkkoppelingen



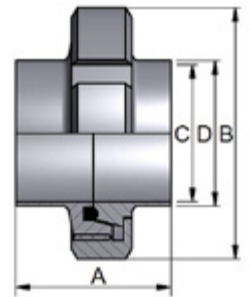
DN	A	B	C	D	Artikel 304 NBR	Artikel 316 NBR
DN10	34.0	38.0	10.0	13.0	112920101200	112920103200
DN15	34.0	44.0	16.0	19.0	112920151200	112920153200
DN20	36.0	54.0	20.0	23.0	112920201200	112920203200
DN25	45.0	63.0	26.0	29.0	112920251200	112920253200
DN32	51.0	70.0	32.0	35.0	112920321200	112920323200
DN40	53.0	78.0	38.0	41.0	112920401200	112920403200
DN50	57.0	92.0	50.0	53.0	112920501200	112920503200
DN65	65.0	112.0	66.0	70.0	112970651200	112970653200
DN80	75.0	127.0	81.0	85.0	112970801200	112970803200
DN100	89.0	148.0	100.0	104.0	112971001200	112971003200
DN125	70.0	178.0	125.0	129.0	112971251200	112971253200
DN150	76.0	210.0	150.0	154.0	112971501200	112971503200

DN	A	B	C	D	Artikel 304 NBR	Artikel 316 NBR
1"	45.0	63.0	22.4	25.4	112931001200	112931003200
1½"	53.0	78.0	35.1	38.1	112931121200	112931123200
2"	57.0	92.0	47.8	50.8	112932001200	112932003200
2½"	65.0	112.0	60.2	63.5	112932121200	112932123200
3"	65.0	119.0	72.8	76.1	112933001200	112933003200
4"	90.0	148.0	97.4	101.6	112934001200	112934003200

Koppelingen

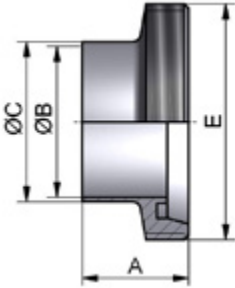
Zuivelkoppelingen DIN 11851

DN	A	B	C	D	Artikel 304 NBR	Artikel 316 NBR
10 ISO	34.0	38.0	10.0	14.0	112980101200	112980103200
15 ISO	34.0	44.0	16.0	18.1	112980151200	112980153200
20 ISO	36.0	54.0	20.0	23.7	112980201200	112980203200
25 ISO	45.0	63.0	26.0	29.7	112980251200	112980253200
32 ISO	51.0	70.0	32.0	38.4	112980321200	112980323200
40 ISO	53.0	78.0	38.0	44.3	112980401200	112980403200
50 ISO	57.0	92.0	50.0	56.3	112980501200	112980503200
65 ISO	65.0	112.0	66.0	71.5	112980651200	112980653200
80 ISO	75.0	127.0	81.0	84.3	112980801200	112980803200
100 ISO	89.0	148.0	100.0	109.1	112981001200	112981003200
125 ISO	70.0	178.0	125.0	134.5	112981251200	112981253200
150 ISO	76.0	210.0	150.0	163.1	112981501200	112981503200



Draadstukken

Lasdraadstuk



Lasdraadstukken volgens DIN 11851 in RVS 304 en 316.
Standaard lasuitvoering.

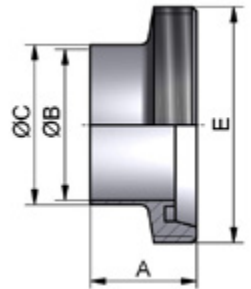
DN	A	B	C	Artikel 304	Artikel 316
DN10	21.0	10.0	13.0	113920101	113920103
DN15	21.0	16.0	19.0	113920151	113920153
DN20	24.0	20.0	23.0	113920201	113920203
DN25	29.0	26.0	29.0	113920251	113920253
DN32	32.0	32.0	35.0	113920321	113920323
DN40	33.0	38.0	41.0	113920401	113920403
DN50	35.0	50.0	53.0	113920501	113920503
DN65	40.0	66.0	70.0	113970651	113970653
DN80	45.0	81.0	85.0	113970801	113970803
DN100	54.0	100.0	104.0	113971001	113971003
DN125	46.0	125.0	129.0	113971251	113971253
DN150	50.0	150.0	154.0	113971501	113971503

DN	A	B	C	Artikel 304	Artikel 316
1"	29.0	22.4	25.4	113911001	113911003
1½"	32.0	35.1	38.1	113911121	113911123
2"	35.0	47.8	50.8	113912001	113912003
2½"	40.0	60.2	63.5	113912121	113912123
3"	40.0	72.8	76.1	113913001	113913003
4"	54.0	97.4	101.6	113914001	113914003

Koppelingen

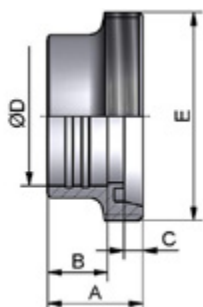
Zuivelkoppelingen DIN 11851

DN	A	B	C	D	Artikel 304	Artikel 316
10 ISO	21.0	14.0	17.2	10.0	113980101	113980103
15 ISO	21.0	18.1	21.3	16.0	113980151	113980153
20 ISO	24.0	23.7	26.9	20.0	113980201	113980203
25 ISO	29.0	29.7	33.7	26.0	113980251	113980253
32 ISO	32.0	38.4	42.4	32.0	113980321	113980323
40 ISO	33.0	44.3	48.3	38.0	113980401	113980403
50 ISO	35.0	56.3	60.3	50.0	113980501	113980503
65 ISO	40.0	72.1	76.1	66.0	113980651	113980653
80 ISO	45.0	84.9	88.9	81.0	113980801	113980803
100 ISO	54.0	110.3	114.3	100.0	113981001	113981003
125 ISO	46.0	134.5	139.7	125.0	113981251	113981253
150 ISO	50.0	163.1	168.3	150.0	113981501	113981503



Koppelingen

Zuivelkoppelingen DIN 11851



Walsdraadstuk

DN	A	B	C	D	Artikel 304	Artikel 316
DN10	21.0	12.0	4.0	12.2	105000101	105000103
DN15	21.0	12.0	4.0	18.2	105000151	105000153
DN20	24.0	12.0	6.0	22.2	105000201	105000203
DN25	29.0	15.0	7.0	28.2	105000251	105000253
DN32	32.0	18.0	7.0	34.2	105000321	105000323
DN40	33.0	20.0	7.0	40.2	105000401	105000403
DN50	35.0	22.0	7.0	52.2	105000501	105000503
DN65	40.0	25.0	8.0	70.3	105000651	105000653
DN80	45.0	28.0	8.0	85.3	105000801	105000803
DN100	54.0	35.0	10.0	104.3	105001001	105001003

DN	A	B	C	D	Artikel 304	Artikel 316
1"	29.0	15.0	7.0	25.6	105011001	105011003
1¼"	32.0	18.0	7.0	32.0	105011141	105011143
1½"	33.0	20.0	7.0	38.3	105011121	105011123
2"	35.0	22.0	7.0	51.0	105012001	105012003
2½"	40.0	25.0	8.0	63.8	105012121	105012123
3"	40.0	25.0	8.0	76.4	105013001	105013003
4"	54.0	35.0	10.0	101.9	105014001	105014003

Lasdraadstuk kort

DN	A	B	C	Artikel 304	Artikel 316
DN10	17.5	9.0	12.0	113040101	113040103
DN15	17.5	15.0	18.0	113040151	113040153
DN20	19.5	19.0	22.0	113040201	113040203
DN25	22.5	25.0	28.0	113040251	113040253
DN32	22.5	31.0	34.0	113040321	113040323
DN40	22.5	37.0	40.0	113040401	113040403
DN50	23.5	49.0	52.0	113040501	113040503
DN65	25.5	66.0	70.0	113040651	113040653
DN80	25.5	81.0	85.0	113040801	113040803
DN100	30.5	100.0	104.0	113041001	113041003
DN125	35.5	125.0	129.0	113041251	113041253
DN150	40.0	150.0	154.0	113041501	113041503



Koppelingen

Zuivelkoppelingen DIN 11851

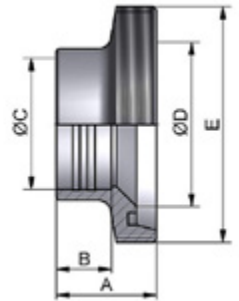
Las Reducerend



DN	A	C	D	Artikel 304	Artikel 316
DN20 - 15	24.0	16.0	20.0	126020201015	126020203015
DN25 - 15	29.0	16.0	26.0	126020251015	126020253015
DN25 - 20	29.0	20.0	26.0	126020251020	126020253020
DN32 - 20	27.0	20.0	32.0	126020321020	126020323020
DN32 - 25	27.0	26.0	32.0	126020321025	126020323025
DN40 - 25	28.0	26.0	38.0	126020401025	126020403025
DN40 - 32	29.0	32.0	38.0	126020401032	126020403032
DN50 - 32	29.0	32.0	50.0	126020501032	126020503032
DN50 - 40	35.0	38.0	50.0	126020501040	126020503040
DN65 - 40	39.0	38.0	66.0	126020651040	126020653040
DN65 - 50	40.0	50.0	66.0	126020651050	126020653050
DN80 - 50	45.0	50.0	81.0	126020801050	126020803050
DN80 - 65	46.0	66.0	81.0	126020801065	126020803065
DN100 - 65	49.0	66.0	100.0	126021001065	126021003065
DN100 - 80	49.0	81.0	100.0	126021001080	126021003080

Wals Reducerend

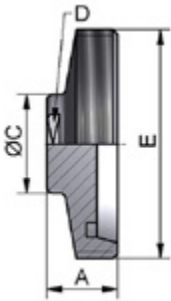
DN	A	B	C	D	Artikel 304	Artikel 316
DN20 - 15	24	12	18,2	20	126000201015	126000203015
DN25 - 15	29	12	18,2	26	126000251015	126000253015
DN25 - 20	29	12	18,2	26	126000251020	126000253020
DN32 - 20	27	15	22,2	32	126000321020	126000323020
DN32 - 25	27	15	22,2	32	126000321025	126000323025
DN40 - 25	28	15	28,2	38	126000401025	126000403025
DN40 - 32	28	15	28,2	38	126000401032	126000403032
DN50 - 32	29	18	34,2	50	126000501032	126000503032
DN50 - 40	29	18	34,2	50	126000501040	126000503040
DN65 - 40	39	20	40,2	66	126000651040	126000653040
DN65 - 50	39	20	40,2	66	126000651050	126000653050
DN80 - 50	45	22	52,2	81	126000801050	126000803050
DN80 - 65	45	22	52,2	81	126000801065	126000803065
DN100 - 65	49	25	70,3	100	126001001065	126001003065
DN100 - 80	49	25	85,3	100	126001001080	126001003080



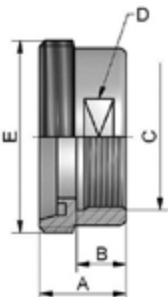
Koppelingen

Zuivelkoppelingen DIN 11851

Blinddraadstuk



DN	A	C	D	Artikel 304	Artikel 316
DN10	21.0	20.0	SW17	117000101	117000103
DN15	21.0	26.0	SW19	117900151	117000153
DN20	24.0	26.0	SW19	117900201	117000203
DN25	24.0	34.0	SW27	117900251	117000253
DN32	24.0	34.0	SW27	117900321	117000323
DN40	24.0	34.0	SW27	117900401	117000403
DN50	24.0	34.0	SW27	117900501	117000503
DN65	28.0	34.0	SW27	117900651	117000653
DN80	30.0	34.0	SW27	117900801	117000803
DN100	30.0	34.0	SW27	117901001	117001003



Opschroef BSP Female

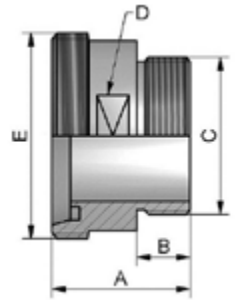
DN	A	B	C	D	Artikel 304	Artikel 316
DN10	30.0	14.0	3/8"	SW19	129000101	129900103
DN15	30.0	14.0	1/2"	SW24	129900151	129900153
DN20	30.0	14.0	3/4"	SW30	129900201	129900203
DN25	35.0	20.0	1"	SW41	129900251	129900253
DN32	35.0	20.0	1.1/4"	SW46	129900321	129900403
DN40	35.0	20.0	1.1/2"	SW55	129900401	129900323
DN50	35.0	20.0	2"	SW65	129900501	129900503
DN65	38.0	22.0	2.1/2"	SW80	129000651	129000653
DN80	43.0	25.0	3"	SW95	129000801	129000803
DN100	50.0	30.0	4"	SW117	129001001	

Koppelingen

Zuivelkoppelingen DIN 11851

Inschroef BSP Male

DN	A	B	C	D	Artikel 304	Artikel 316
DN10	40.0	14.0	3/8"	SW17	128900101	128900103
DN15	40.0	14.0	1/2"	SW24	128900151	128900153
DN20	42.0	14.0	3/4"	SW30	128900201	128900203
DN25	48.0	20.0	1"	SW41	128900251	128900253
DN32	48.0	20.0	1.1/4"	SW46	128900321	128900323
DN40	50.0	20.0	1.1/2"	SW50	128900401	128900403
DN50	52.0	20.0	2"	SW65	128900501	128900503
DN65	56.0	22.0	2.1/2"	SW80	128000651	128000653
DN80	66.0	25.0	3"	SW95	128000801	128000803
DN100	72.0	30.0	4"	SW117	128001001	128001003



Koppelingen

Zuivelkoppelingen DIN 11851



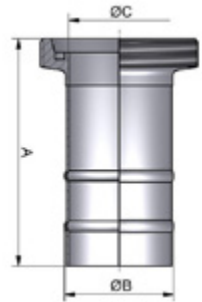
Slangdraadstuk

DN	A	B	C	D	Artikel 304	Artikel 316
DN10	54.0	31.0	10.0	15.0	133000101	133000103
DN15	64.0	40.0	16.0	21.0	133000151	133000153
DN20	78.0	47.0	20.0	27.0	133000201	133000203
DN25	87.0	57.0	26.0	32.0	133000251	133000253
DN32	97.0	67.0	32.0	40.0	133000321	133000323
DN40	112.0	81.0	38.0	48.0	133000401	133000403
DN50	127.0	95.0	50.0	57.0	133000501	133000503
DN65	148.0	112.0	66.0	76.0	133000651	133000653
DN80	168.0	127.0	81.0	90.0	133000801	133000803
DN100	190.0	146.0	100.0	110.0	133001001	133001003

DN	A	B	C	D	Artikel 304	Artikel 316
DN25	83.0	59.0	20.0	27.0	137000251	137000253
DN32	97.0	70.0	27.5	34.0	137000321	137000323
DN40	112.0	84.0	36.0	42.5	137000401	137000403
DN50	127.0	97.0	47.0	53.0	137000501	137000503
DN65	148.0	113.0	60.0	68.0	137000651	137000653
DN80	172.0	132.0	76.0	83.0	137000801	137000803
DN100	190.0	141.0	93.0	103.0	137001001	137001003

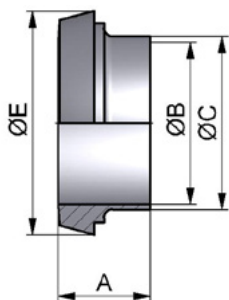
Slangdraadstuk uit buis

DN	A	B	C	Artikel 304	Artikel 316
DN15	67	19,5	16	134000151	134000153
DN20	69	23	20	134000201	134000203
DN25	82	30	26	134000251	134000253
DN32	92	35,5	32	134000321	134000323
DN40	102	43	38	134000401	134000403
DN50	113	55	50	134000501	134000503
DN65	125	73	66	134000651	134000653
DN80	135	89	81	134000801	134000803
DN100	150	108	100	134001001	134001003



Puntstukken

Laspuntstuk



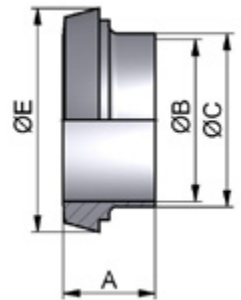
DN	A	B	C	Artikel 304	Artikel 316
DN10	17.0	10.0	13.0	114920101	114920103
DN15	17.0	16.0	19.0	114920151	114920153
DN20	18.0	20.0	23.0	114920201	114920203
DN25	22.0	26.0	29.0	114920251	114920253
DN32	25.0	32.0	35.0	114920321	114920323
DN40	26.0	38.0	41.0	114920401	114920403
DN50	28.0	50.0	53.0	114920501	114920503
DN65	32.0	66.0	70.0	114970651	114970653
DN80	37.0	81.0	85.0	114970801	114970803
DN100	44.0	100.0	104.0	114971001	114971003
DN125	34.0	125.0	129.0	114971251	114971253
DN150	37.0	150.0	154.0	114971501	114971503

DN	A	B	C	Artikel 304	Artikel 316
1"	22.0	22.4	25.4	114911001	114911003
1½"	26.0	35.1	38.1	114911121	114911123
2"	28.0	47.8	50.8	114912001	114912003
2½"	32.0	60.2	63.5	114912121	114912123
3"	32.0	72.8	76.1	114913001	114913003
4"	44.0	97.4	101.6	114914001	114914003

Koppelingen

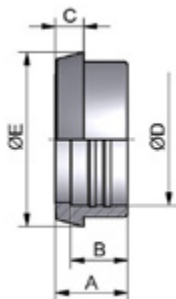
Zuivelkoppelingen DIN 11851

DN	A	B	C	Artikel 304	Artikel 316
15 ISO	17.0	18.1	21.3	114980151	114980153
20 ISO	18.0	23.7	26.9	114980201	114980203
25 ISO	22.0	29.7	33.7	114980251	114980253
32 ISO	25.0	38.4	42.4	114980321	114980323
40 ISO	26.0	44.3	48.3	114980401	114980403
50 ISO	28.0	56.3	60.3	114980501	114980503
65 ISO	32.0	72.1	76.1	114980651	114980653
80 ISO	37.0	84.9	88.9	114980801	114980803
100 ISO	44.0	110.3	114.3	114981001	114981003
125 ISO	34.0	134.5	139.7	114981251	114981253
150 ISO	37.0	163.1	168.3	114981501	114981503



Koppelingen

Zuivelkoppelingen DIN 11851



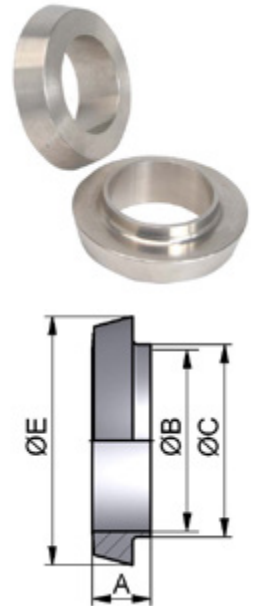
Walspuntstuk

DN	A	B	C	D	Artikel 304	Artikel 316
DN10	17.0	12.0	6.0	12.2	106000101	106000103
DN15	17.0	12.0	6.0	18.2	106000151	106000153
DN20	18.0	12.0	8.0	22.2	106000201	106000203
DN25	22.0	15.0	10.0	28.2	106000251	106000253
DN32	25.0	18.0	10.0	34.2	106000321	106000323
DN40	26.0	20.0	10.0	40.2	106000401	106000403
DN50	28.0	22.0	11.0	52.2	106000501	106000503
DN65	32.0	25.0	12.0	70.3	106000651	106000653
DN80	37.0	28.0	12.0	85.3	106000801	106000803
DN100	44.0	35.0	15.0	104.3	106001001	106001003

DN	A	B	C	D	Artikel 304	Artikel 316
1"	22	15	10	25,6	106011001	106011003
1¼"	25	18	10	32.0	106011141	106011143
1½"	26	20	10	38.3	106011121	106011123
2"	28	22	11	51,0	106012001	106012003
2½"	32	25	12	63,8	106012121	106012123
3"	32	25	12	76,4	106013001	106013003
4"	44	35	15	101,9	106014001	106014003

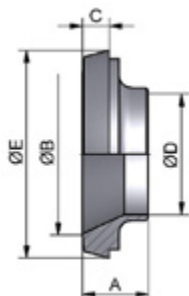
Laspuntstuk kort DIN Reihe 1

DN	A	B	C	Artikel 304	Artikel 316
DN10	13.5	9.0	12.0	114040101	114040103
DN15	13.5	15.0	18.0	114040151	114040153
DN20	13.5	19.0	22.0	114040201	114040203
DN25	15.5	25.0	28.0	114040251	114040253
DN32	15.5	31.0	34.0	114040321	114040323
DN40	15.5	37.0	40.0	114040401	114040403
DN50	16.5	49.0	52.0	114040501	114040503
DN65	17.5	66.0	70.0	114040651	114040653
DN80	17.5	81.0	85.0	114040801	114040803
DN100	20.5	100.0	104.0	114041001	114041003
DN125	23.5	125.0	129.0	114041251	114041253
DN150	27.0	150.0	154.0	114041501	114041503



Koppelingen

Zuivelkoppelingen DIN 11851



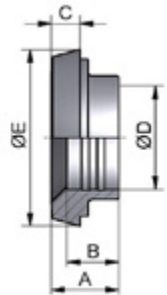
Las reducerend puntstuk

DN	A	B	C	D	Artikel 304	Artikel 316
DN20 - 15	17.0	20.0	8.0	16.0	124020201015	124020203015
DN25 - 15	22.0	26.0	10.0	16.0	124020251015	124020253020
DN25 - 20	22.0	26.0	10.0	20.0	124020251020	124020253020
DN32 - 20	23.0	32.0	10.0	20.0	124020321020	124020403025
DN32 - 25	20.0	32.0	10.0	26.0	124020321025	124020323025
DN40 - 25	20.0	38.0	10.0	26.0	124020401025	124020403025
DN40 - 32	23.0	38.0	10.0	32.0	124020401032	124020403032
DN50 - 25	23.0	50.0	11.0	26.0	124020501025	124020503025
DN50 - 32	23.0	50.0	11.0	32.0	124020501032	124020503032
DN50 - 40	26.0	50.0	11.0	38.0	124020501040	124020503040
DN65 - 40	26.0	66.0	12.0	38.0	124020651040	124020653040
DN65 - 50	27.0	66.0	12.0	50.0	124020651050	124020653050
DN80 - 50	30.0	81.0	12.0	50.0	124020801050	124020803050
DN80 - 65	31.0	81.0	12.0	66.0	124020801065	124020803065
DN100 - 65	40.0	100.0	15.0	66.0	124021001065	124021003065
DN100 - 80	42.0	100.0	15.0	81.0	124021001080	124021003080

Koppelingen Zuivelkoppelingen DIN 11851

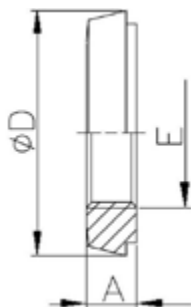
Wals reducerend

DN	A	B	C	D	Artikel 304	Artikel 316
DN20 - 15	25	12	8	18,2	124000201015	124000203015
DN25 - 15	22	12	10	18,2	124000251015	124000253015
DN25 - 20	22	12	10	18,2	124000251020	124000253020
DN32 - 20	23	12	10	22,2	124000321020	124000323020
DN32 - 25	23	12	10	22,2	124000321025	124000323025
DN40 - 25	20	15	10	28,2	124000401025	124000403025
DN40 - 32	20	15	10	28,2	124000401032	124000403032
DN50 - 32	23	18	11	34,2	124000501032	124000503032
DN50 - 40	23	18	11	34,2	124000501040	124000503040
DN65 - 40	26	20	12	40,2	124000651040	124000653040
DN65 - 50	26	20	12	40,2	124000651050	124000653050
DN80 - 50	30	22	12	52,2	124000801050	124000803050
DN80 - 65	30	22	12	52,2	124000801065	124000803065
DN100 - 65	40	25	15	70,4	124001001065	124001003065
DN100 - 80	40	25	15	70,4	124001001080	124001003080



Koppelingen

Zuivelkoppelingen DIN 11851



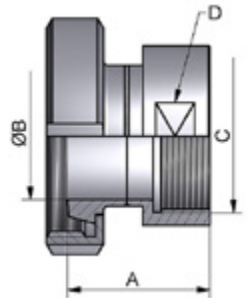
Blindpuntstuk

DN	A	B	Artikel 304	Artikel 316
DN25	10	47	118020251	118020253
DN32	10	53	118020321	118020323
DN40	10	61	118020401	118020403
DN50	11	73	118020501	118020503
DN65	12	90	118020651	118020653
DN80	12	103	118020801	118020803
DN100	15	123	118021001	118021003
DN125	17	153	118021251	118021253

DN	A	B	C	D	Artikel 316
DN10	9.0	6.0	18.0	22.5	118900103
DN15	9.0	6.0	24.0	28.5	118900153
DN20	11.0	8.0	30.0	36.5	118900203
DN25	13.0	10.0	35.0	44.0	118900253
DN32	13.0	10.0	41.0	50.0	118900323
DN40	13.0	10.0	48.0	56.0	118900403
DN50	14.0	11.0	61.0	68.5	118900503
DN65	16.0	12.0	79.0	86.0	118900653
DN75	16.0	12.0	87.0	93.0	118900753
DN80	16.0	12.0	93.0	100.0	118900803
DN100	20.0	15.0	114.0	121.0	118901003
DN125	22.0	17.0	137.0	150.0	118901253
DN150	24.0	18.0	163.0	176.0	118901503

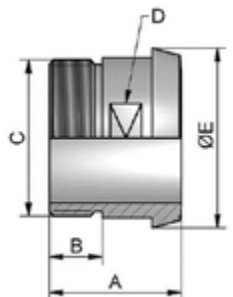
Opschroef BSP Female

DN	A	B	C	D	Artikel 304	Artikel 316
DN15	44.0	16.0	1/2"	SW24	130900151	130900153
DN20	45.0	20.0	3/4"	SW30	130900201	130900203
DN25	49.0	26.0	1"	SW41	130900251	130900253
DN32	52.0	32.0	1.1/4"	SW46	130900321	130900323
DN40	53.0	38.0	1.1/2"	SW55	130900401	130900403
DN50	55.0	50.0	2"	SW65	130900501	130900503
DN65	61.0	66.0	2.1/2"	SW80	130000651	130000653
DN80	67.0	81.0	3"	SW95	130000801	130000803
DN100	76.0	100.0	4"	SW117	130001001	130001003



Inschroef BSP Male

DN	A	B	C	D	Artikel 304	Artikel 316
DN10	38.0	14.0	3/8"	SW14	127000101	127900103
DN15	38.0	14.0	1/2"	SW19	127000151	127900153
DN20	40.0	14.0	3/4"	SW27	127900201	127900203
DN25	50.0	20.0	1"	SW30	127900251	127900253
DN32	50.0	20.0	1.1/4"	SW36	127900321	127900323
DN40	50.0	20.0	1.1/2"	SW44	127900401	127900403
DN50	50.0	20.0	2"	SW55	127900501	127900503
DN65	55.0	22.0	2.1/2"	SW70	127000651	127000653
DN80	60.0	25.0	3"	SW88	127000801	127000803
DN100	70.0	30.0	4"	SW110	127001001	127001003

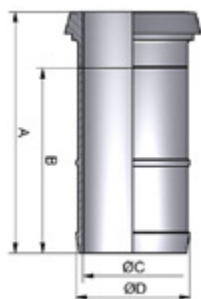


Koppelingen

Zuivelkoppelingen DIN 11851



Slangpuntstuk



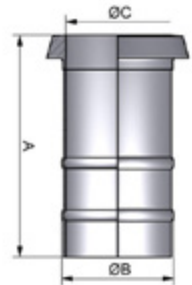
DN	A	B	C	D	Artikel 304	Artikel 316
DN10	50.0	31.0	10.0	15.0	132000101	132000103
DN15	60.0	40.0	16.0	21.0	132000151	132000153
DN20	72.0	47.0	20.0	27.0	132000201	132000203
DN25	80.0	57.0	26.0	32.0	132000251	132000253
DN32	90.0	67.0	32.0	40.0	132000321	132000323
DN40	105.0	81.0	38.0	48.0	132000401	132000403
DN50	120.0	95.0	50.0	57.0	132000501	132000503
DN65	140.0	112.0	66.0	76.0	132000651	132000653
DN80	160.0	127.0	81.0	90.0	132000801	132000803
DN100	180.0	146.0	100.0	110.0	132001001	132001003

DN	A	B	C	D	Artikel 304	Artikel 316
DN25	76.0	59.0	20.0	27.0	136000251	136000253
DN32	90.0	70.0	27.5	34.0	136000321	136000323
DN40	105.0	84.0	36.0	42.5	136000401	136000403
DN50	120.0	97.0	47.0	53.0	136000501	136000503
DN65	140.0	113.0	60.0	68.0	136000651	136000653
DN80	164.0	132.0	73.0	83.0	136000801	136000803
DN100	180.0	141.0	93.0	103.0	136001001	136001003

Koppelingen Zuivelkoppelingen DIN 11851

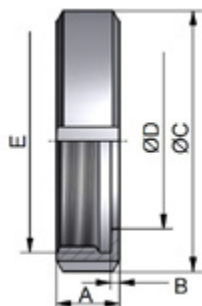
Slangpuntstuk uit buis

DN	A	B	C	Artikel 304	Artikel 316
DN15	63.0	19.5	16.0	135000151	135000153
DN20	63.0	23.0	20.0	135000201	135000203
DN25	75.0	30.0	26.0	135000251	135000253
DN32	85.0	35.5	32.0	135000321	135000323
DN40	95.0	43.0	38.0	135000401	135000403
DN50	106.0	55.0	50.0	135000501	135000503
DN65	117.0	73.0	66.0	135000651	135000653
DN80	127.0	89.0	81.0	135000801	135000803
DN100	140.0	108.0	100.0	135001001	135001003



Wartelmoeren

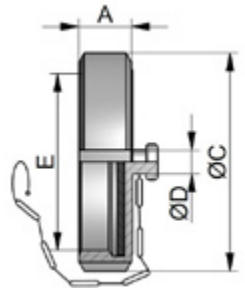
Standaard Wartel



DN	A	B	C	D	Artikel 304	Artikel 316
DN10	18.0	3.0	38.0	19.0	110900101	110900103
DN15	18.0	3.0	44.0	25.0	110900151	110900153
DN20	20.0	3.0	54.0	31.0	110900201	110900203
DN25	21.0	3.0	63.0	36.0	110900251	110900253
DN32	21.0	3.0	70.0	42.0	110900321	110900323
DN32 ISO	21.0	3.0	70.0	43.0	110980321	
DN40	21.0	3.0	78.0	49.0	110900401	110900403
DN50	22.0	3.0	92.0	62.0	110900501	110900503
DN65	25.0	4.0	112.0	80.0	110900651	110900653
DN75	25.0	4.0	119.0	88.0	110900751	110900753
DN80	29.0	4.0	127.0	94.0	110900801	110900803
DN90	30.0	4.0	138.0	104.0	110000901	110000903
DN100	31.0	5.0	148.0	115.0	110901001	110901003
DN125	35.0	5.0	178.0	138.0	110901251	110901253
DN125 ISO	35.0	5.0	178.0	141.0	110981251	
DN150	40.0	6.0	210.0	164.0	110901501	110901503
DN150 ISO	40.0	6.0	210.0	169.0	110981501	
DN200	39.0	6.0	260.0	214.0	110902001	110002003

Blindwartel Compleet

DN	A	B	C	D	Artikel 304	Artikel 316
DN10	18.5	3.5	38.0	10.0	121040101200	121040103200
DN15	18.5	3.5	44.0	10.0	121940151200	121040153200
DN20	20.5	3.5	54.0	10.0	121940201200	121040203200
DN25	21.5	3.5	63.0	10.0	121940251200	121040253200
DN32	21.5	3.5	70.0	10.0	121940321200	121040323200
DN40	21.5	3.5	78.0	10.0	121940401200	121040403200
DN50	22.5	3.5	92.0	10.0	121940501200	121040503200
DN65	25.5	4.5	112.0	10.0	121940651200	121040653200
DN75	25.5	4.5	119.0	10.0	121040751200	121040753200
DN80	29.5	4.5	127.0	10.0	121940801200	121040803200
DN100	31.5	5.5	148.0	10.0	121941001200	121041003200
DN125	35.0	5.5	178.0	10.0	121941251200	121041253200
DN150	40.5	6.5	210.0	10.0	121941501200	121041503200

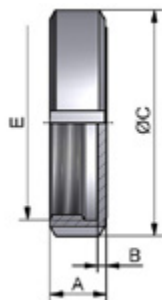


Koppelingen

Zuivelkoppelingen DIN 11851



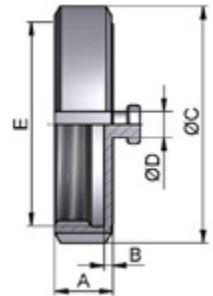
Blindwartel Vlak



DN	A	B	C	Artikel 304	Artikel 316
DN10	18.5	3.5	38.0	120000101	120000103
DN15	18.5	3.5	44.0	120900151	120000153
DN20	20.5	3.5	54.0	120900201	120000203
DN25	21.5	3.5	63.0	120900251	120000253
DN32	21.5	3.5	70.0	120900321	120000323
DN40	21.5	3.5	78.0	120900401	120000403
DN50	22.5	3.5	92.0	120900501	120000503
DN65	25.5	4.5	112.0	120900651	120000653
DN75	25.5	4.5	119.0	120900751	120000753
DN80	29.5	4.5	127.0	120900801	120000803
DN100	31.5	5.5	148.0	120901001	120001003
DN125	35.5	5.5	178.0	120901251	120001253
DN150	40.5	6.5	210.0	120901501	120001503
DN200	39.5	6.5	260.0	120002001	120002003

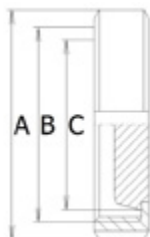
Blindwartel met knop RVS

DN	A	B	C	D	Artikel 304	Artikel 316
DN10	18.5	3.5	38.0	10.0	121000101	121000103
DN15	18.5	3.5	44.0	10.0	121000151	121000153
DN20	20.5	3.5	54.0	10.0	121000201	121000203
DN25	21.5	3.5	63.0	10.0	121000251	121000253
DN32	21.5	3.5	70.0	10.0	121000321	121000323
DN40	21.5	3.5	78.0	10.0	121000401	121000403
DN50	22.5	3.5	92.0	10.0	121000501	121000503
DN65	25.5	4.5	112.0	10.0	121000651	121000653
DN75	25.5	4.5	119.0	10.0	121000751	121000753
DN80	29.5	4.5	127.0	10.0	121000801	121000803
DN100	31.5	5.5	148.0	10.0	121001001	121001003
DN125	35.5	5.5	178.0	10.0	121001251	121001253
DN150	40.5	6.5	210.0	10.0	121001501	121001503



Koppelingen

Zuivelkoppelingen DIN 11851

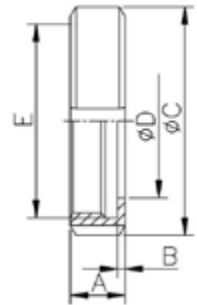


Blindwartel Punststuk

DN	A	B	C	Artikel 316
DN15	44.0	Rd34 x 1/8"	28.5	120960153
DN20	54.0	Rd44 x 1/6"	36.5	120960203
DN25	63.0	Rd52 x 1/6"	44.0	120960253
DN32	70.0	Rd58 x 1/6"	50.0	120960323
DN40	78.0	Rd65 x 1/6"	56.0	120960403
DN50	92.0	Rd78 x 1/6"	68.5	120960503
DN65	112.0	Rd95 x 1/6"	86.0	120960653
DN75	119.0	Rd104 x 1/6"	93.0	120960753
DN80	127.0	Rd110 x 1/4"	100.0	120960803
DN100	148.0	Rd130 x 1/4"	121.0	120961003
DN125	178.0	Rd160 x 1/4"	150.0	120961253
DN150	210.0	Rd190 x 1/4"	176.0	120961503

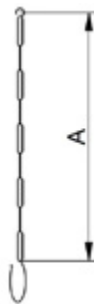
Kijkglaswartel

DN	A	B	C	D	Artikel 304
DN25	21.0	3.0	63.0	26.0	110190251
DN40	21.0	3.0	78.0	38.0	110190401
DN50	22.0	3.0	92.0	50.0	110190501
DN65	25.0	4.0	112.0	66.0	110190651
DN80	29.0	4.0	127.0	81.0	110190801
DN100	31.0	5.0	148.0	100.0	110191001
DN125	35.0	5.0	178.0	125.0	110191251
DN150	40.0	6.0	210.0	150.0	110191501



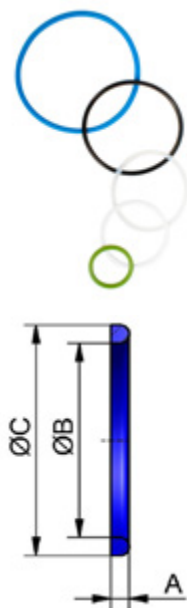
Losse Ketting

DN	A	Artikel 304
DN10	90.0	123020100
DN15	90.0	123020150
DN20	90.0	123020200
DN25	90.0	123020250
DN32	100.0	123020320
DN40	110.0	123020400
DN50	130.0	123020500
DN65	140.0	123020650
DN80	140.0	123020800
DN100	170.0	123021000
DN125	200.0	123021250
DN150	230.0	123021500



Melkkoppeling Afdichtingen

Standaard afdichting



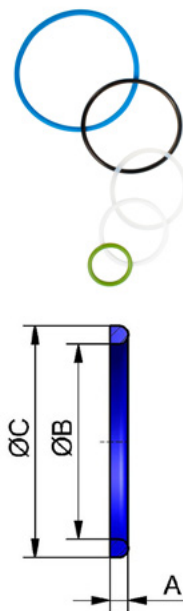
DN	A	B	C	Artikel Siliconen	Artikel NBR	Artikel EPDM
DN10	4.5	12.0	20.0	111000100100	111000100200	111000100300
DN15	4.5	18.0	26.0	111000150100	111000150200	111000150300
DN20	4.5	23.0	33.0	111000200100	111000200200	111000200300
DN25	5.0	30.0	40.0	111000250100	111000250200	111000250300
DN32	5.0	36.0	46.0	111000320100	111000320200	111000320300
DN40	5.0	42.0	52.0	111000400100	111000400200	111000400300
DN50	5.0	54.0	64.0	111000500100	111000500200	111000500300
DN65	5.0	71.0	81.0	111000650100	111000650200	111000650300
DN75	5.0	78.0	88.0	111000750100	111000750200	111000750300
DN80	5.0	85.0	95.0	111000800100	111000800200	111000800300
DN90	5.0	94.0	104.0	111000900100	111000900200	111000900300
DN100	6.0	104.0	114.0	111001000100	111001000200	111001000300
DN125	7.0	130.0	142.0	111001250100	111001250200	111001250300
DN150	7.0	155.0	167.0	111001500100	111001500200	111001500300
DN200	7.0	204.0	216.0	111002000100	111002000200	111002000300

Afdichtingen in FKM, PTFE en HNBR vind je op de volgende pagina.

Koppelingen

Zuivelkoppelingen DIN 11851

DN	A	B	C	Artikel FKM	Artikel PTFE	Artikel HNBR
DN10	4.5	12.0	20.0	111000100400	111000100500	111000100700
DN15	4.5	18.0	26.0	111000150400	111000150500	111000150700
DN20	4.5	23.0	33.0	111000200400	111000200500	111000200700
DN25	5.0	30.0	40.0	111000250400	111000250500	111000250700
DN32	5.0	36.0	46.0	111000320400	111000320500	111000320700
DN40	5.0	42.0	52.0	111000400400	111000400500	111000400700
DN50	5.0	54.0	64.0	111000500400	111000500500	111000500700
DN65	5.0	71.0	81.0	111000650400	111000650500	111000650700
DN75	5.0	78.0	88.0	111000750400	111000750500	111000750700
DN80	5.0	85.0	95.0	111000800400	111000800500	111000800700
DN90	5.0	94.0	104.0	111000900400		
DN100	6.0	104.0	114.0	111001000400	111001000500	111001000700
DN125	7.0	130.0	142.0	111001250400	111001250500	111001250700
DN150	7.0	155.0	167.0	111001500400	111001500500	111001500700
DN200	7.0	204.0	216.0	111002000400		

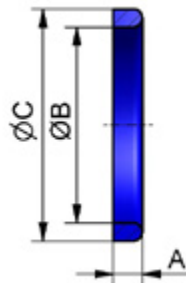


Koppelingen

Zuivelkoppelingen DIN 11851

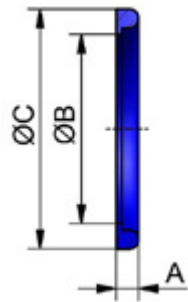
Verhoogde afdichting

DN	A	B	C	Artikel Siliconen	Artikel NBR	Artikel EPDM	Artikel FKM
DN25	8.0	30.0	40.0	111100250100	111100250200	111100250300	111100250400
DN32	8.0	36.0	46.0	111100320100	111100320200	111100320300	111100320400
DN40	8.0	42.0	52.0	111100400100	111100400200	111100400300	111100400400
DN50	8.0	54.0	64.0	111100500100	111100500200	111100500300	111100500400
DN65	8.0	71.0	81.0	111100650100	111100650200	111100650300	111100650400
DN80	8.0	85.0	95.0	111100800100	111100800200	111100800300	111100800400
DN100	8.0	104.0	114.0	111101000100	111101000200	111101000300	111101000400



Afdichting met lip

DN	A	B	C	Artikel Siliconen	Artikel NBR	Artikel EPDM	Artikel FKM
DN10	5.0	10.5	20.0	111200100100	111200100200	111200100300	111200100400
DN15	5.0	16.5	26.0	111200150100	111200150200	111200150300	111200150400
DN20	5.0	20.5	33.0	111200200100	111200200200	111200200300	111200200400
DN25	6.0	26.5	40.0	111200250100	111200250200	111200250300	111200250400
DN32	6.0	32.5	46.0	111200320100	111200320200	111200320300	111200320400
DN40	6.0	38.5	52.0	111200400100	111200400200	111200400300	111200400400
DN50	6.0	50.5	64.0	111200500100	111200500200	111200500300	111200500400
DN65	6.0	66.5	81.0	111200650100	111200650200	111200650300	111200650400
DN80	6.0	81.5	95.0	111200800100	111200800200	111200800300	111200800400
DN100	6.0	100.5	114.0	111201000100	111201000200	111201000300	111201000400
DN125	7.0	125.0	142.0	111201250100	111201250200	111201250300	111201250400
DN150	7.0	150.0	167.0	111201500100	111201500200	111201500300	111201500400

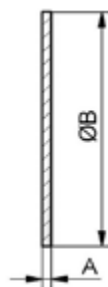


Koppelingen

Zuivelkoppelingen DIN 11851

Dichtschiif Blindwartel

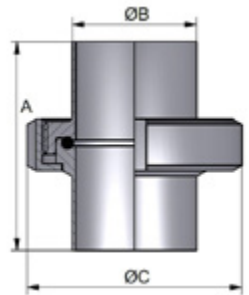
DN	A	B	Artikel NBR	Artikel EPDM	Artikel FKM	Artikel PTFE
DN10	3.0	28.0	122000100200	122000100300	122000100400	122000100500
DN15	3.0	34.0	122000150200	122000150300	122000150400	122000150500
DN20	3.0	44.0	122000200200	122000200300	122000200400	122000200500
DN25	3.0	52.0	122000250200	122000250300	122000250400	122000250500
DN32	3.0	58.0	122000320200	122000320300	122000320400	122000320500
DN40	3.0	65.0	122000400200	122000400300	122000400400	122000400500
DN50	3.0	78.0	122000500200	122000500300	122000500400	122000500500
DN65	3.0	95.0	122000650200	122000650300	122000650400	122000650500
DN75	3.0	104.0	122000750200	122000750300	122000750400	122000750500
DN80	3.0	110.0	122000800200	122000800300	122000800400	122000800500
DN100	3.0	130.0	122001000200	122001000300	122001000400	122001000500
DN125	3.0	160.0	122001250200	122001250300	122001250400	122001250500
DN150	3.0	190.0	122001500200	122001500300	122001500400	122001500500
DN200	3.0	240.0	122002000200	122002000300	122002000400	122002000500



Melkkoppelingen

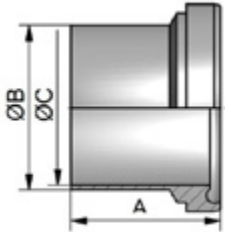
Complete koppeling

DN	A	B	C	Artikel 316 EPDM
DN10	76.0	13.0	38.0	108010108300
DN15	76.0	19.0	44.0	108010158300
DN20	76.0	23.0	54.0	108010208300
DN25	77.0	29.0	63.0	108010258300
DN32	88.0	35.0	70.0	108010328300
DN40	88.0	41.0	78.0	108010408300
DN50	89.0	53.0	92.0	108010508300
DN65	113.0	70.0	112.0	108010658300
DN80	117.0	85.0	127.0	108010808300
DN100	120.0	104.0	148.0	108011008300



DN	A	B	C	Artikel 316 EPDM
1"	77.0	25.4	63.0	108021008300
1½"	88.0	38.1	78.0	108021128300
2"	89.0	50.8	92.0	108022008300
2½"	115.0	63.5	112.0	108022128300
3"	117.0	76.2	127.0	108023008300
4"	119.0	101.6	148.0	108024008300

Koppelingen DIN 11864



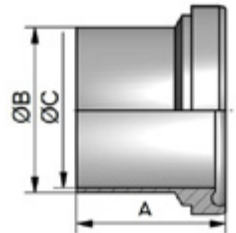
Laspuntstuk

DN	A	B	C	Artikel 1.4404 - Ra<0,8µm
DN10	39.0	13.0	10.0	108110108000
DN15	39.0	19.0	16.0	108110158000
DN20	38.0	23.0	20.0	108110208000
DN25	40.0	29.0	26.0	108110258000
DN32	47.0	35.0	32.0	108110328000
DN40	47.0	41.0	38.0	108110408000
DN50	48.0	53.0	50.0	108110508000
DN65	61.0	70.0	66.0	108110658000
DN80	61.0	85.0	81.0	108110808000
DN100	66.0	104.0	100.0	108111008000

DN	A	B	C	Artikel 1.4404 - Ra<0,8µm
½"	39.0	12.7	9.4	108120128000
¾"	39.0	19.05	15.75	108120348000
1"	40.0	25.4	22.1	108121008000
1½"	46.5	38.1	34.8	108121128000
2"	47.5	50.8	47.5	108122008000
2½"	63.0	63.5	60.2	108122128000
3"	61.0	76.2	72.9	108123008000
4"	65.0	101.6	97.4	108124008000

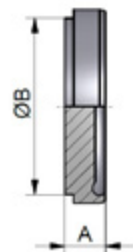
Koppelingen DIN 11864

DN	A	B	C	Artikel 1.4404 - Ra<0,8µm
08 ISO	39.0	13.5	10.3	101130088000
10 ISO	39.0	17.2	14.0	101130108000
15 ISO	40.0	21.3	18.1	101130158000
20 ISO	41.0	26.9	23.7	101130208000
25 ISO	47.0	33.7	29.7	101130258000
32 ISO	47.0	42.4	38.4	101130328000
40 ISO	48.0	48.3	44.3	101130408000
50 ISO	62.0	60.3	56.3	101130508000
65 ISO	61.0	76.1	72.1	101130658000
80 ISO	68.0	88.9	84.3	101130808000
100 ISO	72.0	114.3	109.7	101131008000

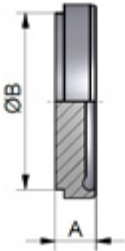


Blindpunktstük

DN	A	B	Artikel DIN 1.4404 - Ra<0.8µm
DN10	9.0	18.0	108260108000
DN15	9.0	24.0	108260158000
DN20	10.0	30.0	108260208000
DN25	12.0	35.0	108260258000
DN32	13.0	41.0	108260328000
DN40	13.0	48.0	108260408000
DN50	14.0	61.0	108260508000
DN65	16.0	79.0	108260658000
DN80	16.0	93.0	108260808000
DN100	20.0	114.0	108261008000



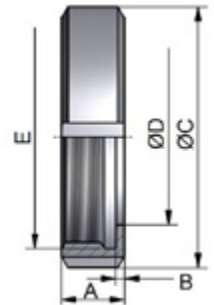
Koppelingen DIN 11864



DN	A	B	Artikel INCH 1.4404 - Ra<0.8µm
½"	9.0	18.0	108270128000
¾"	9.0	24.0	108270348000
1"	12.0	35.0	108271008000
1½"	13.0	48.0	108271128000
2"	14.0	61.0	108272008000
2½"	16.0	79.0	108272128000
3"	16.0	93.0	108273008000
4"	20.0	114.0	108274008000

DN	A	B	Artikel ISO 1.4435 - Ra<0,4µm
08 ISO	9.0	18.0	101280085000
10 ISO	9.0	24.0	101280105000
15 ISO	10.0	30.0	101280155000
20 ISO	12.0	35.0	101280205000
25 ISO	13.0	41.0	101280255000
32 ISO	13.0	48.0	101280325000
40 ISO	14.0	61.0	101280405000
50 ISO	16.0	79.0	101280505000
65 ISO	16.0	93.0	101280655000
80 ISO	20.0	114.0	101280805000
100 ISO	22.0	137.0	101281005000

Wartelmoeren



DN	A	B	C	D	E	Artikel 304
DN10	18.0	3.0	38.0	19.0	Rd28x1/8"	110900101
DN15	18.0	3.0	44.0	25.0	Rd34x1/8"	110900151
DN20	20.0	3.0	54.0	31.0	Rd44x1/6"	110900201
DN25	21.0	3.0	63.0	36.0	Rd52x1/6"	110900251
DN32	21.0	3.0	70.0	42.0	Rd58x1/6"	110900321
DN40	21.0	3.0	78.0	49.0	Rd65x1/6"	110900401
DN50	22.0	3.0	92.0	62.0	Rd78x1/6"	110900501
DN65	25.0	4.0	112.0	80.0	Rd95x1/6"	110900651
DN80	29.0	4.0	127.0	94.0	Rd110x1/4"	110900801
DN100	31.0	5.0	148.0	115.0	Rd130x1/4"	110901001
DN125	35.0	5.0	178.0	138.0	Rd160x1/4"	110901251
DN150	40.0	6.0	210.0	164.0	Rd190x1/4"	110901501
DN200	39.0	6.0	260.0	214.0	Rd240x1/4"	110902001

DN	A	B	C	D	E	Artikel 316
DN10	18.0	3.0	38.0	19.0	Rd28x1/8"	110900103
DN15 / ½"	18.0	3.0	44.0	25.0	Rd34x1/8"	110900153
DN20 / ¾"	20.0	3.0	54.0	31.0	Rd44x1/6"	110900203
DN25 / 1"	21.0	3.0	63.0	36.0	Rd52x1/6"	110900253
DN32	21.0	3.0	70.0	42.0	Rd58x1/6"	110900323
DN40 / 1½"	21.0	3.0	78.0	49.0	Rd65x1/6"	110900403
DN50 / 2"	22.0	3.0	92.0	62.0	Rd78x1/6"	110900503
DN65 / 2½"	25.0	4.0	112.0	80.0	Rd95x1/6"	110900653
DN80	29.0	4.0	127.0	94.0	Rd110x1/4"	110900803
DN100 / 4"	31.0	5.0	148.0	115.0	Rd130x1/4"	110901003
DN125	35.0	5.0	178.0	138.0	Rd160x1/4"	110901253

Koppelingen DIN 11864



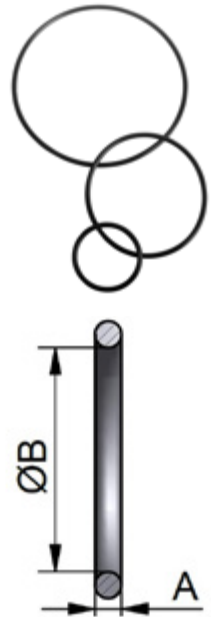
Afdichtingen

DN	A	B	Artikel EPDM	Artikel VITON	Artikel HNBR
DN10	3.5	12.0	101170100300	101170100400	101170100700
DN15	3.5	18.0	101170150300	101170150400	101170150700
DN20	3.5	22.0	101170200300	101170200400	101170200700
DN25	3.5	28.0	101170250300	101170250400	101170250700
DN32	5.0	34.0	101170320300	101170320400	101170320700
DN40	5.0	40.0	101170400300	101170400400	101170400700
DN50	5.0	52.0	101170500300	101170500400	101170500700
DN65	5.0	68.0	101170650300	101170650400	101170650700
DN80	5.0	83.0	101170800300	101170800400	101170800700
DN100	5.0	102.0	101171000300	101171000400	101171000700
DN125	5.0	127.0	101171250300	101171250400	101171250700
DN150	5.0	152.0	101171500300	101171500400	101171500700

DN	A	B	Artikel EPDM	Artikel VITON	Artikel HNBR
1"	3.5	24.0	101181000300	101181000400	101181000700
1½"	5.0	37.0	101181120300	101181120400	101181120700
2"	5.0	50.0	101182000300	101182000400	101182000700
2½"	5.0	62.0	101182120300	101182120400	101182120700
3"	5.0	75.0	101183000300	101183000400	101183000700
4"	5.0	100.0	101184000300	101184000400	101184000700

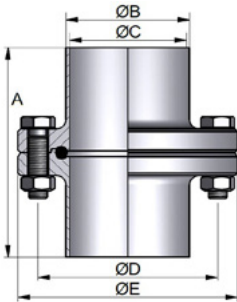
Koppelingen DIN 11864

DN	A	B	Artikel EPDM	Artikel VITON
08 ISO	3.5	12.0	101190080300	101190080400
10 ISO	3.5	16.0	101190100300	101190100400
15 ISO	3.5	20.0	101190150300	101190150400
20 ISO	3.5	26.0	101190200300	101190200400
25 ISO	5.0	32.0	101190250300	101190250400
32 ISO	5.0	40.5	101190320300	101190320400
40 ISO	5.0	46.5	101190400300	101190400400
50 ISO	5.0	58.5	101190500300	101190500400
65 ISO	5.0	73.5	101190650300	101190650400
80 ISO	5.0	86.5	101190800300	101190800400
100 ISO	5.0	111.0	101191000300	101191000400



Flenskoppelingen

Complete Koppeling

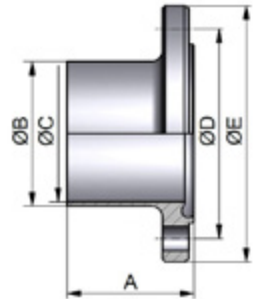


DN	A	B	C	D	E	Artikel 1.4404 / Ra<0,8µm
DN10	80.0	13.0	10.0	37.0	54.0	108590108300
DN15	80.0	19.0	16.0	42.0	59.0	108590158300
DN20	80.0	23.0	20.0	47.0	64.0	108590208300
DN25	80.0	29.0	26.0	53.0	70.0	108590258300
DN32	90.0	35.0	32.0	59.0	76.0	108590328300
DN40	90.0	41.0	38.0	65.0	82.0	108590408300
DN50	90.0	53.0	50.0	77.0	94.0	108590508300
DN65	108.0	70.0	66.0	95.0	113.0	108590658300
DN80	116.0	85.0	81.0	112.0	133.0	108590808300
DN100	116.0	104.0	100.0	137.0	159.0	108591008300
DN125	120.0	129.0	125.0	161.0	183.0	108591258300
DN150	120.0	154.0	150.0	188.0	213.0	108591508300
DN200	92.0	204.0	200.0	240.0	265.0	108592008300
DN250	92.0	254.0	250.0	290.0	315.0	108592508300
DN300	92.0	304.0	300.0	350.0	380.0	108593008300

DN	A	B	C	D	E	Artikel 1.4404 / Ra<0,8µm
½"	80.0	12.7	9.4	37.0	54.0	108600128300
¾"	80.0	19.05	15.75	42.0	59.0	108600348300
1"	80.0	25.4	22.1	49.0	66.0	108601008300
1½"	90.0	38.1	34.8	62.0	79.0	108601128300
2"	90.0	50.8	47.5	75.0	92.0	108602008300
2½"	108.0	63.5	60.2	89.0	107.0	108602128300
3"	112.0	76.2	72.9	104.0	125.0	108603008300
4"	116.0	101.6	97.4	135.0	157.0	108604008300

Nutflens

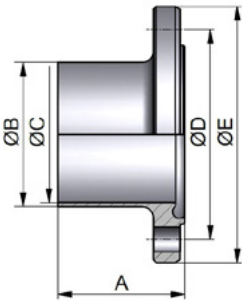
DN	A	B	C	D	E	Artikel 1.4404 / Ra<0,8µm
DN10	41.5	13.0	10.0	37.0	54.0	108630108000
DN15	41.5	19.0	16.0	42.0	59.0	108630158000
DN20	41.5	23.0	20.0	47.0	64.0	108630208000
DN25	41.5	29.0	26.0	53.0	70.0	108630258000
DN32	46.5	35.0	32.0	59.0	76.0	108630328000
DN40	46.5	41.0	38.0	65.0	82.0	108630408000
DN50	46.5	53.0	50.0	77.0	94.0	108630508000
DN65	55.5	70.0	66.0	95.0	113.0	108630658000
DN80	59.5	85.0	81.0	112.0	133.0	108630808000
DN100	59.5	104.0	100.0	137.0	159.0	108631008000
DN125	61.5	129.0	125.0	161.0	183.0	108631258000
DN150	61.5	154.0	150.0	188.0	213.0	108631508000
DN200	47.5	204.0	200.0	240.0	265.0	108632008000
DN250	47.5	254.0	250.0	290.0	315.0	108632508000
DN300	47.5	306.0	300.0	350.0	380.0	108633008000



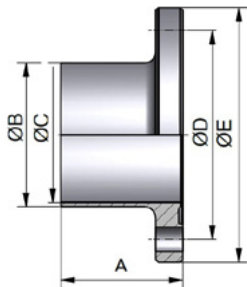
DN	A	B	C	D	E	Artikel 1.4404 / Ra<0,8µm
½"	41.5	12.7	9.4	37.0	54.0	108640128000
¾"	41.5	19.05	15.75	42.0	59.0	108640348000
1"	41.5	25.4	22.1	49.0	66.0	108641008000
1½"	46.5	38.1	34.8	62.0	79.0	108641128000
2"	46.5	50.8	47.5	75.0	92.0	108642008000
2½"	55.5	63.5	60.2	89.0	107.0	108642128000
3"	57.5	76.2	72.9	104.0	125.0	108643008000
4"	59.5	101.6	97.4	135.0	157.0	108644008000



Koppelingen DIN 11864



DN	A	B	C	D	E	Artikel 1.4404 / Ra<0,8µm
08 ISO	41.5	13.5	10.3	37.0	54.0	101650088000
10 ISO	41.5	17.2	14.0	42.0	59.0	101650108000
15 ISO	41.5	21.3	18.1	45.0	62.0	101650158000
20 ISO	41.5	26.9	23.7	52.0	69.0	101650208000
25 ISO	46.5	33.7	29.7	57.0	74.0	101650258000
32 ISO	46.5	42.4	38.4	65.0	82.0	101650328000
40 ISO	46.5	48.3	44.3	71.0	88.0	101650408000
50 ISO	55.5	60.3	56.3	85.0	103.0	101650508000
65 ISO	57.5	76.1	72.1	104.0	125.0	101650658000
80 ISO	59.5	88.9	84.3	116.0	137.0	101650808000
100 ISO	59.5	114.3	109.7	146.0	168.0	101651008000

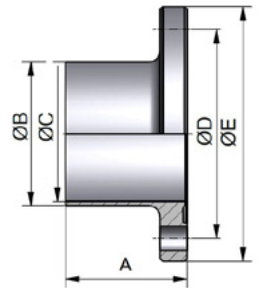


Bundflens

DN	A	B	C	D	E	Artikel 1.4404 / Ra<0,8µm
08 ISO	40.0	13.5	10.3	37.0	54.0	101680088000
10 ISO	40.0	17.2	14.0	42.0	59.0	101680108000
15 ISO	40.0	21.3	18.1	45.0	62.0	101680158000
20 ISO	40.0	26.9	23.7	52.0	69.0	101680208000
25 ISO	45.0	33.7	29.7	57.0	74.0	101680258000
32 ISO	45.0	42.4	38.4	65.0	82.0	101680328000
40 ISO	45.0	48.3	44.3	71.0	88.0	101680408000
50 ISO	54.0	60.3	56.3	85.0	103.0	101680508000
65 ISO	56.0	76.1	72.1	104.0	125.0	101680658000
80 ISO	58.0	88.9	84.3	116.0	137.0	101680808000
100 ISO	58.0	114.3	109.7	146.0	168.0	101681008000

Koppelingen DIN 11864

DN	A	B	C	D	E	Artikel 1.4404 / Ra<0,8µm
DN10	40.0	13.0	10.0	37.0	54.0	108660108000
DN15	40.0	19.0	16.0	42.0	59.0	108660158000
DN20	40.0	23.0	20.0	47.0	64.0	108660208000
DN25	40.0	29.0	26.0	53.0	70.0	108660258000
DN32	45.0	35.0	32.0	59.0	76.0	108660328000
DN40	45.0	41.0	38.0	65.0	82.0	108660408000
DN50	45.0	53.0	50.0	77.0	94.0	108660508000
DN65	54.0	70.0	66.0	95.0	113.0	108660658000
DN80	58.0	85.0	81.0	112.0	133.0	108660808000
DN100	58.0	104.0	100.0	137.0	159.0	108661008000
DN125	60.0	129.0	125.0	161.0	183.0	108661258000
DN150	60.0	154.0	150.0	188.0	213.0	108661508000
DN200	46.0	204.0	200.0	240.0	265.0	108662008000
DN250	46.0	254.0	250.0	290.0	315.0	108662508000
DN300	46.0	306.0	300.0	350.0	380.0	108663008000



DN	A	B	C	D	E	Artikel 1.4404 / Ra<0,8µm
½"	40.0	12.7	9.4	37.0	54.0	108670128000
¾"	40.0	19.05	15.75	42.0	59.0	108670348000
1"	40.0	25.4	22.1	49.0	66.0	108671008000
1½"	45.0	38.1	34.8	62.0	79.0	108671128000
2"	45.0	50.8	47.5	75.0	92.0	108672008000
2½"	54.0	63.5	60.2	89.0	107.0	108672128000
3"	56.0	76.2	72.9	104.0	125.0	108673008000
4"	58.0	101.6	97.4	135.0	157.0	108674008000



Koppelingen DIN 11864



Blinde Nutflens

DN	A	D	E	Artikel 1.4404 / Ra<0,8µm
DN10	11.5	37.0	54.0	101760103000
DN15	11.5	42.0	59.0	101760153000
DN20	11.5	47.0	64.0	101760203000
DN25	11.5	53.0	70.0	101760253000
DN32	11.5	59.0	76.0	101760323000
DN40	11.5	65.0	82.0	101760403000
DN50	11.5	77.0	94.0	101760503000
DN65	11.5	95.0	113.0	101760653000
DN80	13.5	112.0	133.0	101760803000
DN100	15.5	137.0	159.0	101761003000
DN125	15.5	161.0	183.0	101761253000
DN150	17.5	188.0	213.0	101761503000

DN	A	D	E	Artikel 1.4435 / Ra<0,4µm
½"	11.5	37.0	54.0	107770125000
¾"	11.5	42.0	59.0	107770345000
1"	11.5	49.0	66.0	107771005000
1½"	11.5	62.0	79.0	107771125000
2"	11.5	75.0	92.0	107772005000
2½"	11.5	89.0	107.0	107772125000
3"	13.5	104.0	125.0	107773005000
4"	15.5	135.0	157.0	107774005000

Koppelingen DIN 11864

DN	A	D	E	Artikel 1.4435 / Ra<0,4µm
08 ISO	11.5	37.0	54.0	101780085000
10 ISO	11.5	42.0	59.0	101780105000
15 ISO	11.5	45.0	62.0	101780155000
20 ISO	11.5	52.0	69.0	101780205000
25 ISO	11.5	57.0	74.0	101780255000
32 ISO	11.5	65.0	82.0	101780325000
40 ISO	11.5	71.0	88.0	101780405000
50 ISO	11.5	85.0	103.0	101780505000
65 ISO	13.5	104.0	125.0	101780655000
80 ISO	13.5	116.0	137.0	101780805000
100 ISO	15.5	146.0	168.0	101781005000



Koppelingen DIN 11864

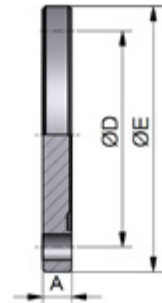


Blinde Bundflens

DN	A	D	E	Artikel 1.4404 / Ra<0,8µm
DN10	10.0	37.0	54.0	108790108000
DN15	10.0	42.0	59.0	108790158000
DN20	10.0	47.0	64.0	108790208000
DN25	10.0	53.0	70.0	108790258000
DN32	10.0	59.0	76.0	108790328000
DN40	10.0	65.0	82.0	108790408000
DN50	10.0	77.0	94.0	108790508000
DN65	10.0	95.0	113.0	108790658000
DN80	12.0	112.0	133.0	108790808000
DN100	14.0	137.0	159.0	108791008000
DN125	14.0	161.0	183.0	108791258000
DN150	16.0	188.0	213.0	108791508000
DN200	16.0	240.0	265.0	108792008000
DN250	16.0	290.0	315.0	108792508000
DN300	22.0	350.0	380.0	108793008000

Koppelingen DIN 11864

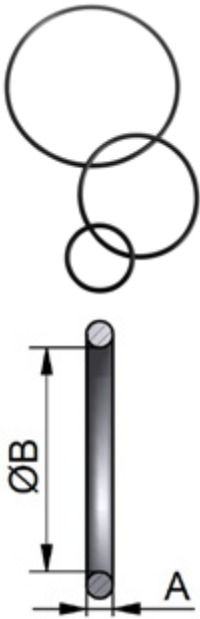
DN	A	D	E	Artikel 1.4404 / Ra<0,8µm
½"	10.0	37.0	54.0	108800128000
¾"	10.0	42.0	59.0	108800348000
1"	10.0	49.0	66.0	108801008000
1½"	10.0	62.0	79.0	108801128000
2"	10.0	75.0	92.0	108802008000
2½"	10.0	89.0	107.0	108802128000
3"	12.0	104.0	125.0	108803008000
4"	14.0	135.0	157.0	108804008000



DN	A	D	E	Artikel 1.4435 / Ra<0,4µm
08 ISO	12.0	37.0	54.0	101810085000
10 ISO	14.0	42.0	59.0	101810105000
15 ISO	10.0	45.0	62.0	101810155000
20 ISO	10.0	52.0	69.0	101810205000
25 ISO	10.0	57.0	74.0	101810255000
32 ISO	10.0	65.0	82.0	101810325000
40 ISO	10.0	71.0	82.0	101810405000
50 ISO	10.0	85.0	103.0	101810505000
65 ISO	10.0	104.0	125.0	101810655000
80 ISO	10.0	116.0	137.0	101810805000
100 ISO	12.0	146.0	168.0	101811005000



Koppelingen DIN 11864



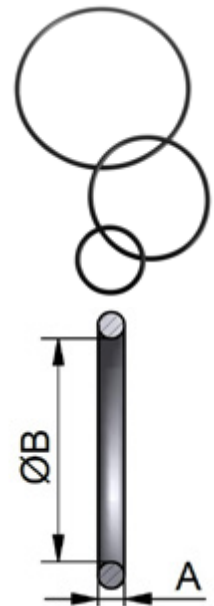
Afdichtingen

DN	A	B	Artikel EPDM	Artikel VITON	Artikel HNBR
DN10	3.5	12.0	101170100300	101170100400	101170100700
DN15	3.5	18.0	101170150300	101170150400	101170150700
DN20	3.5	22.0	101170200300	101170200400	101170200700
DN25	3.5	28.0	101170250300	101170250400	101170250700
DN32	5.0	34.0	101170320300	101170320400	101170320700
DN40	5.0	40.0	101170400300	101170400400	101170400700
DN50	5.0	52.0	101170500300	101170500400	101170500700
DN65	5.0	68.0	101170650300	101170650400	101170650700
DN80	5.0	83.0	101170800300	101170800400	101170800700
DN100	5.0	102.0	101171000300	101171000400	101171000700
DN125	5.0	127.0	101171250300	101171250400	101171250700
DN150	5.0	152.0	101171500300	101171500400	101171500700

DN	A	B	Artikel EPDM	Artikel VITON	Artikel HNBR
1"	3.5	24.0	101181000300	101181000400	101181000700
1½"	5.0	37.0	101181120300	101181120400	101181120700
2"	5.0	50.0	101182000300	101182000400	101182000700
2½"	5.0	62.0	101182120300	101182120400	101182120700
3"	5.0	75.0	101183000300	101183000400	101183000700
4"	5.0	100.0	101184000300	101184000400	101184000700

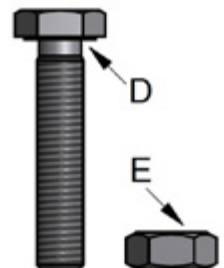
Koppelingen DIN 11864

DN	A	B	Artikel EPDM	Artikel VITON
08 ISO	3.5	12.0	101190080300	101190080400
10 ISO	3.5	16.0	101190100300	101190100400
15 ISO	3.5	20.0	101190150300	101190150400
20 ISO	3.5	26.0	101190200300	101190200400
25 ISO	5.0	32.0	101190250300	101190250400
32 ISO	5.0	40.5	101190320300	101190320400
40 ISO	5.0	46.5	101190400300	101190400400
50 ISO	5.0	58.5	101190500300	101190500400
65 ISO	5.0	73.5	101190650300	101190650400
80 ISO	5.0	86.5	101190800300	101190800400
100 ISO	5.0	111.0	101191000300	101191000400



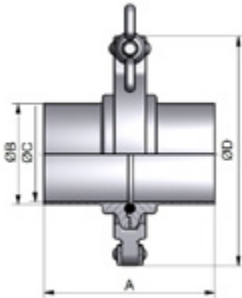
Montagesets

DN	DIN	INCH	ISO	D	E	Artikel 304
DN10- DN50 / ½" - 2"	DN10 ~ DN50	½"~2"	13,5 ~ 60,3	M8 x 30mm	M8	101700108000
DN65 / 2½"	DN65	2½"		M8 x 30mm	M8	101700658000
DN80	DN80	3"~4"	76,1 ~ 88,9 ~ 114,3	M10 x 35mm	M10	101700808000
DN100 / DN125	DN100 ~ DN125			M10 x 40mm	M10	101701008000
DN150	DN150			M12 x 50mm	M12	101701508000



Clampkoppelingen

Complete Koppeling

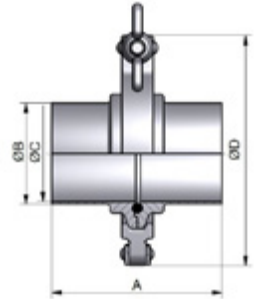


DN	A	B	C	D	Artikel 1.4404 / Ra<0,8µm
DN15	76.0	19.0	16.0	43.0	101830158300
DN20	76.0	23.0	20.0	57.0	101830208300
DN25	77.0	29.0	26.0	57.0	101830258300
DN32	88.0	35.0	32.0	57.0	101830328300
DN40	88.0	41.0	38.0	73.0	101830408300
DN50	89.0	53.0	50.0	89.0	101830508300
DN65	113.0	70.0	66.0	99.0	101830658300
DN80	117.0	85.0	81.0	118.0	101830808300
DN100	120.0	104.0	100.0	145.0	101831008300

DN	A	B	C	D	Artikel 1.4404 / Ra<0,8µm
½"	76.0	12.7	9.4	43.0	101840128300
¾"	76.0	19.05	15.75	43.0	101840348300
1"	77.0	25.4	22.1	57.0	101841008300
1½"	88.0	38.1	34.8	73.0	101841128300
2"	89.0	50.8	47.5	89.0	101842008300
2½"	115.0	63.5	60.2	99.0	101842128300
3"	117.0	76.2	72.9	118.0	101843008300
4"	119.0	101.6	97.4	145.0	101844008300

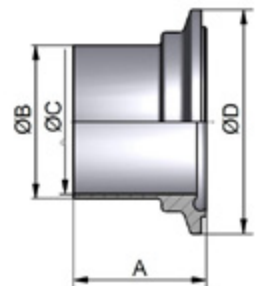
Koppelingen DIN 11864

DN	A	B	C	D	Artikel 1.4404 / Ra<0,8µm
08 ISO	76.0	13.5	10.3	43.0	101850088300
10 ISO	76.0	17.2	14.0	43.0	101850108300
15 ISO	78.0	21.3	18.1	43.0	101850158300
20 ISO	78.0	26.9	23.7	57.0	101850208300
25 ISO	88.0	33.7	29.7	57.0	101850258300
32 ISO	88.0	42.4	38.4	73.0	101850328300
40 ISO	90.0	48.3	44.3	73.0	101850408300
50 ISO	114.0	60.3	56.3	99.0	101850508300
65 ISO	117.0	76.1	72.1	118.0	101850658300
80 ISO	122.0	88.9	84.3	127.0	101850808300
100 ISO	130.0	114.3	109.7	155.0	101851008300

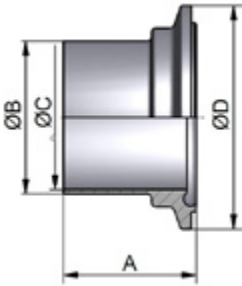


Nutferrulle

DN	A	B	C	D	Artikel 1.4404 / Ra<0,8µm
DN10	39.5	13.0	10.0	34.0	101860108000
DN15	39.5	19.0	16.0	34.0	101860158000
DN20	39.5	23.0	20.0	50.5	101860208000
DN25	40.0	29.0	26.0	50.5	101860258000
DN32	45.5	35.0	32.0	50.5	101860328000
DN40	45.5	41.0	38.0	64.0	101860408000
DN50	46.0	53.0	50.0	77.5	101860508000
DN65	58.0	70.0	66.0	91.0	101860658000
DN80	60.0	85.0	81.0	106.0	101860808000
DN100	61.5	104.0	100.0	130.0	101861008000



Koppelingen DIN 11864

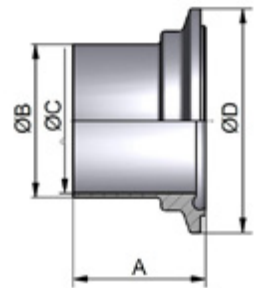


DN	A	B	C	D	Artikel 1.4404 / Ra<0,8µm
½"	39.5	12.7	9.4	34.0	101870128000
¾"	39.5	19.05	15.75	34.0	101870348000
1"	40.0	25.4	22.1	50.5	101871008000
1½"	45.5	38.1	34.8	64.0	101871128000
2"	46.0	50.8	47.5	77.5	101872008000
2½"	59.0	63.5	60.2	91.0	101872128000
3"	60.0	76.2	72.9	106.0	101873008000
4"	61.0	101.6	97.4	130.0	101874008000

DN	A	B	C	D	Artikel 1.4404 / Ra<0,8µm
08 ISO	39.5	13.5	10.3	34.0	101880088000
10 ISO	39.5	17.2	14.0	34.0	101880108000
15 ISO	40.5	21.3	18.1	34.0	101880158000
20 ISO	40.5	26.9	23.7	50.5	101880208000
25 ISO	45.5	33.7	29.7	50.5	101880258000
32 ISO	45.5	42.4	38.4	64.0	101880328000
40 ISO	46.5	48.3	44.3	64.0	101880408000
50 ISO	58.5	60.3	56.3	91.0	101880508000
65 ISO	60.0	76.1	72.1	106.0	101880658000
80 ISO	62.5	88.9	84.3	119.0	101880808000
100 ISO	66.5	114.3	109.7	144.4	101881008000

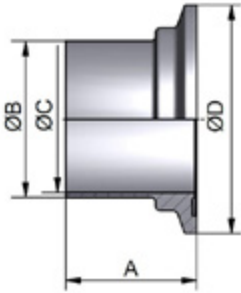
Bundferrule

DN	A	B	C	D	Artikel 1.4404 / Ra<0,8µm
DN10	38.0	13.0	10.0	34.0	101890108000
DN15	38.0	19.0	16.0	34.0	101890158000
DN20	38.0	23.0	20.0	50.5	101890208000
DN25	38.5	29.0	26.0	50.5	101890258000
DN32	44.0	35.0	32.0	50.5	101890328000
DN40	44.0	41.0	38.0	64.0	101890408000
DN50	44.5	53.0	50.0	77.5	101890508000
DN65	56.5	70.0	66.0	91.0	101890658000
DN80	58.5	85.0	81.0	106.0	101890808000
DN100	60.0	104.0	100.0	130.0	101891008000



DN	A	B	C	D	Artikel 1.4404 / Ra<0,8µm
½"	38.0	12.7	9.4	34.0	101900128000
¾"	38.0	19.05	15.75	34.0	101900348000
1"	38.5	25.4	22.1	50.5	101901008000
1½"	44.0	38.1	34.8	64.0	101901128000
2"	44.5	50.8	47.5	77.5	101902008000
2½"	57.5	63.5	60.2	91.0	101902128000
3"	58.5	76.2	72.9	106.0	101903008000
4"	59.5	101.6	97.4	130.0	101904008000

Koppelingen DIN 11864



DN	A	B	C	D	Artikel 1.4404 / Ra<0,8µm
08 ISO	38.0	13.5	10.3	34.0	101910088000
10 ISO	38.0	17.2	14.0	34.0	101910108000
15 ISO	39.0	21.3	18.1	34.0	101910158000
20 ISO	39.0	26.9	23.7	50.5	101910208000
25 ISO	44.0	33.7	29.7	50.5	101910258000
32 ISO	44.0	42.4	38.4	64.0	101910328000
40 ISO	45.0	48.3	44.3	64.0	101910408000
50 ISO	57.0	60.3	56.3	91.0	101910508000
65 ISO	58.5	76.1	72.1	106.0	101910658000
80 ISO	61.0	88.9	84.3	119.0	101910808000
100 ISO	65.0	114.3	109.7	144.4	101911008000

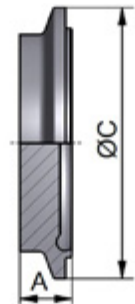


Blinde Nutferrule

DN	A	C	Artikel 1.4435 / Ra<0,4µm
DN10	13.0	34.0	101920105000
DN15	13.0	34.0	101920155000
DN20	13.0	50.5	101920205000
DN25	13.0	50.5	101920255000
DN32	13.0	50.5	101920325000
DN40	13.0	64.0	101920405000
DN50	15.0	77.5	101920505000
DN65	15.0	91.0	101920655000
DN80	15.0	106.0	101920805000
DN100	15.0	130.0	101921005000
DN150	24.0	183.0	101921505000

Koppelingen DIN 11864

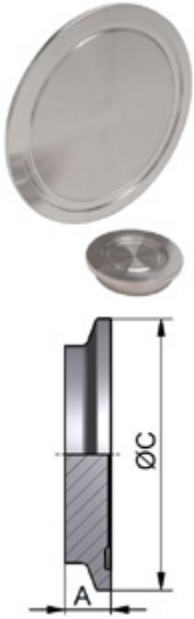
DN	A	C	Artikel 1.4435 / Ra<0,4µm
½"	13.0	34.0	101930125000
¾"	13.0	34.0	101930345000
1"	13.0	50.5	101931005000
1½"	13.0	64.0	101931125000
2"	15.0	77.5	101932005000
2½"	15.0	91.0	101932125000
3"	15.0	106.0	101933005000
4"	15.0	130.0	101934005000



DN	A	C	Artikel 1.4435 / Ra<0,4µm
08 ISO	13.0	34.0	101940085000
10 ISO	13.0	34.0	101940105000
15 ISO	13.0	34.0	101940155000
20 ISO	13.0	50.5	101940205000
25 ISO	13.0	50.5	101940255000
32 ISO	13.0	64.0	101940325000
40 ISO	13.0	64.0	101940405000
50 ISO	15.0	91.0	101940505000
65 ISO	15.0	106.0	101940655000
80 ISO	15.0	119.0	101940805000
100 ISO	15.0	144.4	101941005000



Koppelingen DIN 11864



Blinde Bundferrule

DN	A	C	Artikel 1.4435 / Ra<0,4µm
DN10	11.5	34.0	101950105000
DN15	11.5	34.0	101950155000
DN20	11.5	50.5	101950205000
DN25	11.5	50.5	101950255000
DN32	11.5	50.5	101950325000
DN40	11.5	64.0	101950405000
DN50	13.5	77.5	101950505000
DN65	13.5	91.0	101950655000
DN80	13.5	106.0	101950805000
DN100	13.5	130.0	101951005000

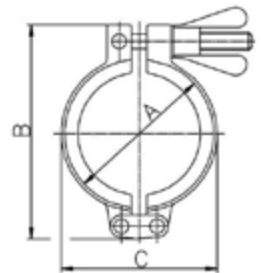
DN	A	C	Artikel 1.4435 / Ra<0,4µm
½"	11.5	34.0	101960125000
¾"	11.5	34.0	101960345000
1"	11.5	50.5	101961005000
1½"	11.5	64.0	101961125000
2"	13.5	77.5	101962005000
2½"	13.5	91.0	101962125000
3"	13.5	106.0	101963005000
4"	13.5	130.0	101964005000

Koppelingen DIN 11864

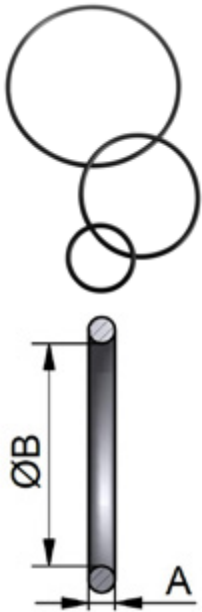
DN	A	C	Artikel 1.4435 / Ra<0,4µm
08 ISO	11.5	34.0	101970085000
10 ISO	11.5	34.0	101970105000
15 ISO	11.5	34.0	101970155000
20 ISO	11.5	50.5	101970205000
25 ISO	11.5	50.5	101970255000
32 ISO	11.5	64.0	101970325000
40 ISO	11.5	64.0	101970405000
50 ISO	13.5	91.0	101970505000
65 ISO	13.5	106.0	101970655000
80 ISO	13.5	119.0	101970805000
100 ISO	13.5	114.4	101971005000

Klembanden

DN	A	D	Artikel 304
25.0	25.0	25.0	188910121
34.0	34.0	34.0	188900201
50.5	50.5	50.5	188911001
64.0	64.0	64.0	188912001
77.5	77.5	77.5	188912121
91.0	91.0	91.0	188913001
106.0	106.0	106.0	188900801
119.0	119.0	119.0	188914001
130.0	130.0	130.0	188914121
155.0	155.0	155.0	188915121
167.0	167.0	167.0	188916001
183.0	183.0	183.0	188916581
217.4	217.4	217.4	188918001
233.5	233.5	233.5	188918581
268.0	268.0	268.0	188926851
319.0	319.0	319.0	188931931



Koppelingen DIN 11864



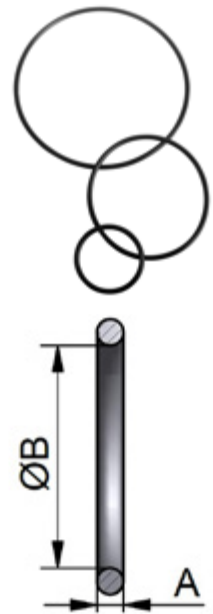
Afdichtingen

DN	A	B	Artikel EPDM	Artikel VITON	Artikel HNBR
DN10	3.5	12.0	101170100300	101170100400	101170100700
DN15	3.5	18.0	101170150300	101170150400	101170150700
DN20	3.5	22.0	101170200300	101170200400	101170200700
DN25	3.5	28.0	101170250300	101170250400	101170250700
DN32	5.0	34.0	101170320300	101170320400	101170320700
DN40	5.0	40.0	101170400300	101170400400	101170400700
DN50	5.0	52.0	101170500300	101170500400	101170500700
DN65	5.0	68.0	101170650300	101170650400	101170650700
DN80	5.0	83.0	101170800300	101170800400	101170800700
DN100	5.0	102.0	101171000300	101171000400	101171000700
DN125	5.0	127.0	101171250300	101171250400	101171250700
DN150	5.0	152.0	101171500300	101171500400	101171500700

DN	A	B	Artikel EPDM	Artikel VITON	Artikel HNBR
1"	3.5	24.0	101181000300	101181000400	101181000700
1½"	5.0	37.0	101181120300	101181120400	101181120700
2"	5.0	50.0	101182000300	101182000400	101182000700
2½"	5.0	62.0	101182120300	101182120400	101182120700
3"	5.0	75.0	101183000300	101183000400	101183000700
4"	5.0	100.0	101184000300	101184000400	101184000700

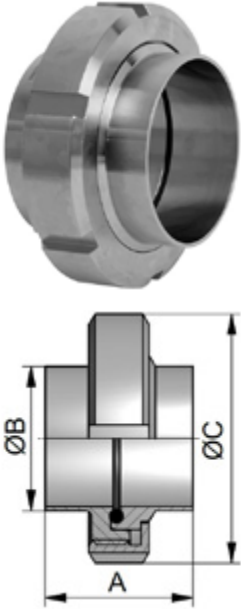
Koppelingen DIN 11864

DN	A	B	Artikel EPDM	Artikel VITON
08 ISO	3.5	12.0	101190080300	101190080400
10 ISO	3.5	16.0	101190100300	101190100400
15 ISO	3.5	20.0	101190150300	101190150400
20 ISO	3.5	26.0	101190200300	101190200400
25 ISO	5.0	32.0	101190250300	101190250400
32 ISO	5.0	40.5	101190320300	101190320400
40 ISO	5.0	46.5	101190400300	101190400400
50 ISO	5.0	58.5	101190500300	101190500400
65 ISO	5.0	73.5	101190650300	101190650400
80 ISO	5.0	86.5	101190800300	101190800400
100 ISO	5.0	111.0	101191000300	101191000400



Melkkoppelingen

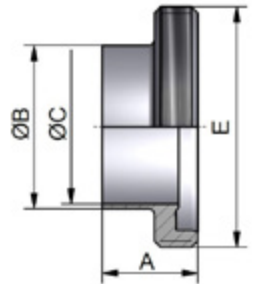
Complete koppeling



DN	A	B	C	Artikel 316 EPDM
DN10	34.0	13.0	38.0	108010103300
DN15	34.0	19.0	44.0	108010153300
DN20	37.0	23.0	54.0	108010203300
DN25	46.0	29.0	63.0	108010253300
DN32	53.0	35.0	70.0	108010323300
DN40	55.0	41.0	78.0	108010403300
DN50	59.0	53.0	92.0	108010503300
DN65	68.0	70.0	112.0	108010653300
DN80	78.0	85.0	127.0	108010803300
DN100	94.0	104.0	148.0	108011003300

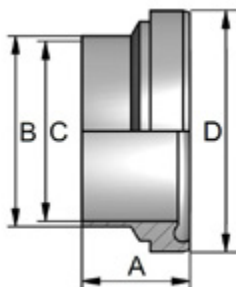
Lasdraadstuk

DN	A	B	C	E	Artikel 1.4404 / Ra<0,8µm
DN10	19.0	13.0	10.0	Rd28x1/8	101140103000
DN15	19.0	19.0	16.0	Rd34x1/8	101140153000
DN20	21.0	23.0	20.0	Rd44x1/6	101140203000
DN25	26.0	29.0	26.0	Rd52x1/6	108140258000
DN32	30.0	35.0	32.0	Rd58x1/6	108140328000
DN40	31.0	41.0	38.0	Rd65x1/6	108140408000
DN50	31.0	53.0	50.0	Rd78x1/6	108140508000
DN65	36.0	70.0	66.0	Rd95x1/6	108140658000
DN80	42.0	85.0	81.0	Rd110x1/4	108140808000
DN100	50.0	104.0	100.0	Rd130x1/4	108141008000



DN	A	B	C	E	Artikel 1.4404 / Ra<0,8µm
½"	19.0	12.7	9.4	Rd28x1/8	101150123000
¾"	19.0	19.05	15.75	Rd34x1/8	101150343000
1"	26.0	25.4	22.1	Rd52x1/6	101151003000
1½"	31.0	38.1	34.8	Rd65x1/6	101151123000
2"	31.0	50.8	47.5	Rd78x1/6	101152003000
2½"	36.0	63.5	60.2	Rd95x1/6	101152123000
3"	42.0	76.2	72.9	Rd110x1/4	101153003000
4"	50.0	101.6	97.4	Rd130x1/4	101154003000

Koppelingen DIN 11853



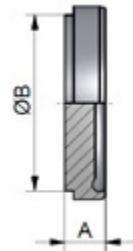
Laspuntstuk

DN	A	B	C	Artikel 1.4404 / Ra<0,8µm
DN25	22.0	29.0	26.0	108200258000
DN32	25.0	35.0	32.0	108200328000
DN40	26.0	41.0	38.0	108200408000
DN50	30.0	53.0	50.0	108200508000
DN65	34.0	70.0	66.0	108200658000
DN80	38.0	85.0	81.0	108200808000
DN100	46.0	104.0	100.0	108201008000

DN	A	B	C	Artikel 1.4404 / Ra<0,8µm
¾"	17.0	19.05	15.75	101210343000
1"	22.0	25.4	22.1	101211003000
1½"	26.0	38.1	34.8	101211123000
2"	30.0	50.8	47.5	101212003000
2½"	34.0	63.5	60.2	101212123000
3"	38.0	76.2	72.9	101213003000
4"	46.0	101.6	97.4	101214003000

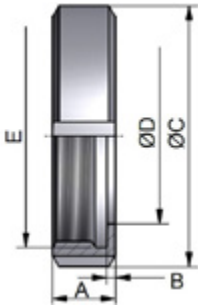
Blindpuntstuk

DN	A	B	Artikel 1.4404 / Ra<0,8µm
DN10	9.0	18.0	108260108000
DN15	9.0	24.0	108260158000
DN20	10.0	30.0	108260208000
DN25	12.0	35.0	108260258000
DN32	13.0	41.0	108260328000
DN40	13.0	48.0	108260408000
DN50	14.0	61.0	108260508000
DN65	16.0	79.0	108260658000
DN80	16.0	93.0	108260808000
DN100	20.0	114.0	108261008000



DN	A	B	Artikel 1.4404 / Ra<0,8µm
½"	9.0	18.0	108270128000
¾"	9.0	24.0	108270348000
1"	12.0	35.0	108271008000
1½"	13.0	48.0	108271128000
2"	14.0	61.0	108272008000
2½"	16.0	79.0	108272128000
3"	16.0	93.0	108273008000
4"	20.0	114.0	108274008000

Koppelingen DIN 11853



Wartelmoeren

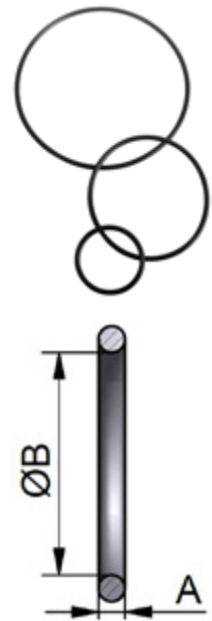
DN	A	B	C	D	E	Artikel 304
DN10	18.0	3.0	38.0	19.0	Rd28x1/8"	110900101
DN15	18.0	3.0	44.0	25.0	Rd34x1/8"	110900151
DN20	20.0	3.0	54.0	31.0	Rd44x1/6"	110900201
DN25	21.0	3.0	63.0	36.0	Rd52x1/6"	110900251
DN32	21.0	3.0	70.0	42.0	Rd58x1/6"	110900321
DN40	21.0	3.0	78.0	49.0	Rd65x1/6"	110900401
DN50	22.0	3.0	92.0	62.0	Rd78x1/6"	110900501
DN65	25.0	4.0	112.0	80.0	Rd95x1/6"	110900651
DN80	29.0	4.0	127.0	94.0	Rd110x1/4"	110900801
DN100	31.0	5.0	148.0	115.0	Rd130x1/4"	110901001
DN125	35.0	5.0	178.0	138.0	Rd160x1/4"	110901251
DN150	40.0	6.0	210.0	164.0	Rd190x1/4"	110901501
DN200	39.0	6.0	260.0	214.0	Rd240x1/4"	110902001

DN	A	B	C	D	E	Artikel 316
DN10	18.0	3.0	38.0	19.0	Rd28x1/8"	110900103
DN15 / ½"	18.0	3.0	44.0	25.0	Rd34x1/8"	110900153
DN20 / ¾"	20.0	3.0	54.0	31.0	Rd44x1/6"	110900203
DN25 / 1"	21.0	3.0	63.0	36.0	Rd52x1/6"	110900253
DN32	21.0	3.0	70.0	42.0	Rd58x1/6"	110900323
DN40 / 1½"	21.0	3.0	78.0	49.0	Rd65x1/6"	110900403
DN50 / 2"	22.0	3.0	92.0	62.0	Rd78x1/6"	110900503
DN65 / 2½"	25.0	4.0	112.0	80.0	Rd95x1/6"	110900653
DN80	29.0	4.0	127.0	94.0	Rd110x1/4"	110900803
DN100 / 4"	31.0	5.0	148.0	115.0	Rd130x1/4"	110901003
DN125	35.0	5.0	178.0	138.0	Rd160x1/4"	110901253
DN150	40.0	6.0	210.0	164.0	Rd190x1/4"	110901503
DN200	39.0	6.0	260.0	214.0	Rd240x1/4"	110002003

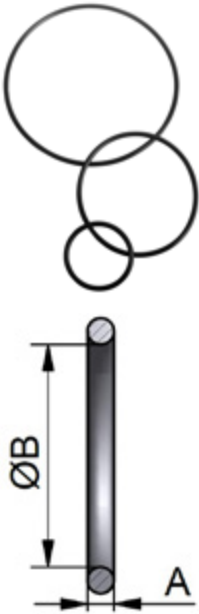
Afdichtingen

DN	A	B	Artikel EPDM	Artikel VITON	Artikel HNBR
DN10	3.5	12.0	101170100300	101170100400	101170100700
DN15	3.5	18.0	101170150300	101170150400	101170150700
DN20	3.5	22.0	101170200300	101170200400	101170200700
DN25	3.5	28.0	101170250300	101170250400	101170250700
DN32	5.0	34.0	101170320300	101170320400	101170320700
DN40	5.0	40.0	101170400300	101170400400	101170400700
DN50	5.0	52.0	101170500300	101170500400	101170500700
DN65	5.0	68.0	101170650300	101170650400	101170650700
DN80	5.0	83.0	101170800300	101170800400	101170800700
DN100	5.0	102.0	101171000300	101171000400	101171000700
DN125	5.0	127.0	101171250300	101171250400	101171250700
DN150	5.0	152.0	101171500300	101171500400	101171500700

DN	A	B	Artikel EPDM	Artikel VITON	Artikel HNBR
1"	3.5	24.0	101181000300	101181000400	101181000700
1½"	5.0	37.0	101181120300	101181120400	101181120700
2"	5.0	50.0	101182000300	101182000400	101182000700
2½"	5.0	62.0	101182120300	101182120400	101182120700
3"	5.0	75.0	101183000300	101183000400	101183000700
4"	5.0	100.0	101184000300	101184000400	101184000700



Koppelingen DIN 11853

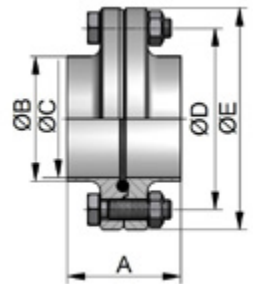


DN	A	B	Artikel EPDM	Artikel VITON
08 ISO	3.5	12.0	101190080300	101190080400
10 ISO	3.5	16.0	101190100300	101190100400
15 ISO	3.5	20.0	101190150300	101190150400
20 ISO	3.5	26.0	101190200300	101190200400
25 ISO	5.0	32.0	101190250300	101190250400
32 ISO	5.0	40.5	101190320300	101190320400
40 ISO	5.0	46.5	101190400300	101190400400
50 ISO	5.0	58.5	101190500300	101190500400
65 ISO	5.0	73.5	101190650300	101190650400
80 ISO	5.0	86.5	101190800300	101190800400
100 ISO	5.0	111.0	101191000300	101191000400

Flenskoppelingen

Complete koppeling

DN	A	B	C	D	E	Artikel 316 EPDM
DN25	48.0	29.0	26.0	53.0	70.0	108590253300
DN40	48.0	41.0	38.0	65.0	82.0	108590403300
DN50	48.0	53.0	50.0	77.0	94.0	108590503300
DN65	48.0	70.0	66.0	95.0	113.0	108590653300
DN80	52.0	85.0	81.0	112.0	133.0	108590803300
DN100	52.0	104.0	100.0	137.0	159.0	108591003300



Koppelingen DIN 11853



Nutflens

DN	A	B	C	D	E	Artikel 1.4404 / Ra<0,8µm
DN10	25.5	13.0	10.0	37.0	54.0	101400103000
DN15	25.5	19.0	16.0	42.0	59.0	101400153000
DN20	25.5	23.0	20.0	47.0	64.0	101400203000
DN25	25.5	29.0	26.0	53.0	70.0	108400258000
DN40	25.5	41.0	38.0	65.0	82.0	108400408000
DN50	25.5	53.0	50.0	77.0	94.0	108400508000
DN65	25.5	70.0	66.0	95.0	113.0	108400658000
DN80	27.5	85.0	81.0	112.0	133.0	108400808000
DN100	27.5	104.0	100.0	137.0	159.0	108401008000
DN125	29.5	129.0	125.0	161.0	183.0	101401253000
DN150	29.5	154.0	150.0	188.0	213.0	101401503000

DN	A	B	C	D	E	Artikel 1.4404 / Ra<0,8µm
½"	25.5	12.7	9.4	37.0	54.0	101410123000
¾"	25.5	19.05	15.75	42.0	59.0	101410343000
1"	25.5	25.4	22.1	49.0	66.0	101411003000
1½"	25.5	38.1	34.8	62.0	79.0	101411123000
2"	25.5	50.8	47.5	75.0	92.0	101412003000
2½"	25.5	63.5	60.2	89.0	107.0	101412123000
3"	25.5	76.2	72.9	104.0	125.0	101413003000
4"	27.5	101.6	97.4	135.0	157.0	101414003000

Bundflens

DN	A	B	C	D	E	Artikel 1.4404 / Ra<0,8µm
DN10	24.0	13.0	10.0	37.0	54.0	101430103000
DN15	24.0	19.0	16.0	42.0	59.0	101430153000
DN20	24.0	23.0	20.0	47.0	64.0	101430203000
DN25	24.0	29.0	26.0	53.0	70.0	108430258000
DN40	24.0	41.0	38.0	65.0	82.0	108430408000
DN50	24.0	53.0	50.0	77.0	94.0	108430508000
DN65	24.0	70.0	66.0	95.0	113.0	108430658000
DN80	26.0	85.0	81.0	112.0	133.0	108430808000
DN100	26.0	104.0	100.0	137.0	159.0	108431008000
DN125	28.0	129.0	125.0	161.0	183.0	101431253000
DN150	28.0	154.0	150.0	188.0	213.0	101431503000



DN	A	B	C	D	E	Artikel 1.4404 / Ra<0,8µm
½"	24.0	12.7	9.4	37.0	54.0	101440123000
¾"	24.0	19.05	15.75	42.0	59.0	101440343000
1"	24.0	25.4	22.1	49.0	66.0	101441003000
1½"	24.0	38.1	34.8	62.0	79.0	101441123000
2"	24.0	50.8	47.5	75.0	92.0	101442003000
2½"	24.0	63.5	60.2	89.0	107.0	101442123000
3"	24.0	76.2	72.9	104.2	125.0	101443003000
4"	26.0	101.6	97.4	135.0	157.0	101444003000

Koppelingen DIN 11853



Blinde Nutflens

DN	A	D	E	Artikel 1.4404 / Ra<0,8µm
DN10	11.5	37.0	54.0	101760103000
DN15	11.5	42.0	59.0	101760153000
DN20	11.5	47.0	64.0	101760203000
DN25	11.5	53.0	70.0	101760253000
DN32	11.5	59.0	76.0	101760323000
DN40	11.5	65.0	82.0	101760403000
DN50	11.5	77.0	94.0	101760503000
DN65	11.5	95.0	113.0	101760653000
DN80	13.5	112.0	133.0	101760803000
DN100	15.5	137.0	159.0	101761003000
DN125	15.5	161.0	183.0	101761253000
DN150	17.5	188.0	213.0	101761503000

DN	A	D	E	Artikel 1.4404 / Ra<0,8µm
½"	11.5	37.0	54.0	107770125000
¾"	11.5	42.0	59.0	107770345000
1"	11.5	49.0	66.0	107771005000
1½"	11.5	62.0	79.0	107771125000
2"	11.5	75.0	92.0	107772005000
2½"	11.5	89.0	107.0	107772125000
3"	13.5	104.0	125.0	107773005000
4"	15.5	135.0	157.0	107774005000

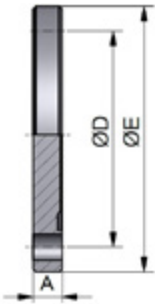
Blinde Bundflens

DN	A	D	E	Artikel 1.4404 / Ra<0,8µm
DN15	10.0	42.0	59.0	108790158000
DN20	10.0	47.0	64.0	108790208000
DN25	10.0	53.0	70.0	108790258000
DN10	10.0	37.0	54.0	108790108000
DN32	10.0	59.0	76.0	108790328000
DN40	10.0	65.0	82.0	108790408000
DN50	10.0	77.0	94.0	108790508000
DN65	10.0	95.0	113.0	108790658000
DN80	12.0	112.0	133.0	108790808000
DN100	14.0	137.0	159.0	108791008000
DN125	14.0	161.0	183.0	108791258000
DN150	16.0	188.0	213.0	108791508000



DN	A	D	E	Artikel 1.4404 / Ra<0,8µm
½"	10.0	37.0	54.0	108800128000
¾"	10.0	42.0	59.0	108800348000
1"	10.0	49.0	66.0	108801008000
1½"	10.0	62.0	79.0	108801128000
2"	10.0	75.0	92.0	108802008000
2½"	10.0	89.0	107.0	108802128000
3"	12.0	104.0	125.0	108803008000
4"	14.0	135.0	157.0	108804008000

Koppelingen DIN 11853



DN	A	D	E	Artikel 1.4435 / Ra<0,4µm
08 ISO	12.0	37.0	54.0	101810085000
10 ISO	14.0	42.0	59.0	101810105000
15 ISO	10.0	45.0	62.0	101810155000
20 ISO	10.0	52.0	69.0	101810205000
25 ISO	10.0	57.0	74.0	101810255000
32 ISO	10.0	65.0	82.0	101810325000
40 ISO	10.0	71.0	82.0	101810405000
50 ISO	10.0	85.0	103.0	101810505000
65 ISO	10.0	104.0	125.0	101810655000
80 ISO	10.0	116.0	137.0	101810805000
100 ISO	12.0	146.0	168.0	101811005000

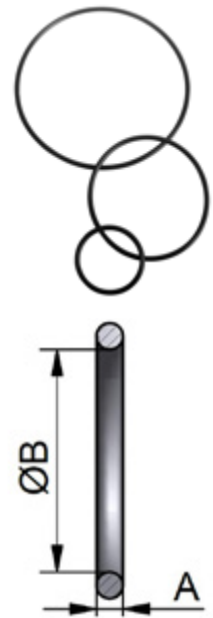


Montagesets

DN	DIN	INCH	ISO	D	E	Artikel 304
DN10 t/m DN50	DN10 ~ DN50	½" ~ 2"	13,5 ~ 60,3	M8 x 30mm	M8	101700108000
DN65 / 2½"	DN65	2½"		M8 x 30mm	M8	101700658000
DN80 / 4" / 88,9 + 114,3	DN80	3" ~ 4"	76,1 ~ 88,9 ~ 114,3	M10 x 35mm	M10	101700808000
DN100 + DN125	DN100 ~ DN125			M10 x 40mm	M10	101701008000
DN150	DN150			M12 x 50mm	M12	101701508000

Afdichtingen

DN	A	B	Artikel EPDM	Artikel VITON	Artikel HNBR
DN10	3.5	12.0	101170100300	101170100400	101170100700
DN15	3.5	18.0	101170150300	101170150400	101170150700
DN20	3.5	22.0	101170200300	101170200400	101170200700
DN25	3.5	28.0	101170250300	101170250400	101170250700
DN32	5.0	34.0	101170320300	101170320400	101170320700
DN40	5.0	40.0	101170400300	101170400400	101170400700
DN50	5.0	52.0	101170500300	101170500400	101170500700
DN65	5.0	68.0	101170650300	101170650400	101170650700
DN80	5.0	83.0	101170800300	101170800400	101170800700
DN100	5.0	102.0	101171000300	101171000400	101171000700
DN125	5.0	127.0	101171250300	101171250400	101171250700
DN150	5.0	152.0	101171500300	101171500400	101171500700



DN	A	B	Artikel EPDM	Artikel VITON	Artikel HNBR
1"	3.5	24.0	101181000300	101181000400	101181000700
1½"	5.0	37.0	101181120300	101181120400	101181120700
2"	5.0	50.0	101182000300	101182000400	101182000700
2½"	5.0	62.0	101182120300	101182120400	101182120700
3"	5.0	75.0	101183000300	101183000400	101183000700
4"	5.0	100.0	101184000300	101184000400	101184000700

Koppelingen DIN 11853

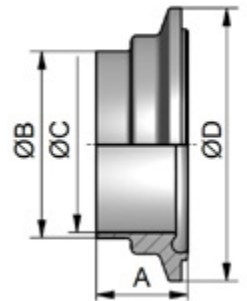


DN	A	B	Artikel EPDM	Artikel VITON
08 ISO	3.5	12.0	101190080300	101190080400
10 ISO	3.5	16.0	101190100300	101190100400
15 ISO	3.5	20.0	101190150300	101190150400
20 ISO	3.5	26.0	101190200300	101190200400
25 ISO	5.0	32.0	101190250300	101190250400
32 ISO	5.0	40.5	101190320300	101190320400
40 ISO	5.0	46.5	101190400300	101190400400
50 ISO	5.0	58.5	101190500300	101190500400
65 ISO	5.0	73.5	101190650300	101190650400
80 ISO	5.0	86.5	101190800300	101190800400
100 ISO	5.0	111.0	101191000300	101191000400

Clampkoppelingen

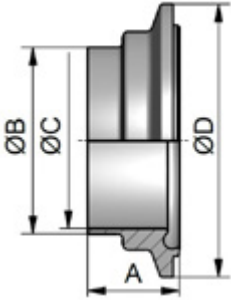
Nutferrule

DN	A	B	C	D	Artikel 1.4404 / Ra<0,8µm
DN10	23.5	13.0	10.0	34.0	101690103000
DN15	23.5	19.0	16.0	34.0	101690153000
DN20	23.5	23.0	20.0	50.5	101690203000
DN25	23.5	29.0	26.0	50.5	101690253000
DN32	25.5	35.0	32.0	50.5	101690323000
DN40	25.5	41.0	38.0	64.0	101690403000
DN50	26.0	53.0	50.0	77.5	101690503000
DN65	28.0	70.0	66.0	91.0	101690653000
DN80	30.0	85.0	81.0	106.0	101690803000
DN100	31.5	104.0	100.0	130.0	101691003000



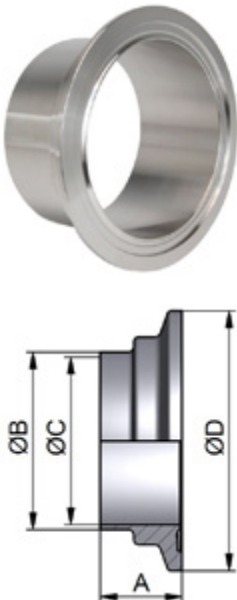
DN	A	B	C	D	Artikel 1.4404 / Ra<0,8µm
½"	23.5	12.7	9.4	34.0	101710123000
¾"	23.5	19.05	15.75	34.0	101710343000
1"	23.5	25.4	22.1	50.5	101711003000
1½"	25.5	38.1	34.8	64.0	101711123000
2"	26.0	50.8	47.5	77.5	101712003000
2½"	29.0	63.5	60.2	91.0	101712123000
3"	30.0	76.2	72.9	106.0	101713003000
4"	31.0	101.6	97.4	130.0	101714003000

Koppelingen DIN 11853



DN	A	B	C	D	Artikel 1.4404 / Ra<0,8µm
10 ISO	23.5	17.2	14.0	34.0	101720103000
20 ISO	23.5	26.9	23.7	50.5	101720153000
25 ISO	23.5	26.9	23.7	50.5	101720203000
32 ISO	25.5	33.7	29.7	50.5	101720253000
40 ISO	25.5	42.4	38.4	64.0	101720323000
50 ISO	26.5	48.3	44.3	64.0	101720403000
65 ISO	28.5	60.3	56.3	91.0	101720503000
80 ISO	30.0	76.1	72.1	106.0	101720653000
100 ISO	32.5	88.9	84.3	119.0	101720803000

Bundferrule



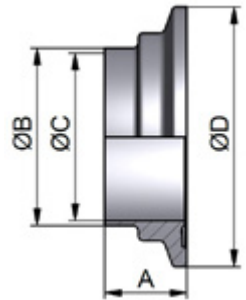
DN	A	B	C	D	Artikel 1.4404 / Ra<0,8µm
DN10	22.0	13.0	10.0	34.0	101730103000
DN15	22.0	19.0	16.0	34.0	101730153000
DN20	22.0	23.0	20.0	50.5	101730203000
DN25	22.0	29.0	26.0	50.5	101730253000
DN32	24.0	35.0	32.0	50.5	101730323000
DN40	24.0	41.0	38.0	64.0	101730403000
DN50	24.5	53.0	50.0	77.5	101730503000
DN65	26.5	70.0	66.0	91.0	101730653000
DN80	26.5	70.0	66.0	91.0	101730803000
DN100	30.0	104.0	100.0	130.0	101731003000

Koppelingen DIN 11853

DN	A	B	C	D	Artikel 1.4404 / Ra<0,8µm
½"	22.0	12.7	9.4	34.0	101740123000
¾"	22.0	19.05	15.75	34.0	101740343000
1"	22.0	25.4	22.1	50.5	101741003000
1½"	24.0	38.1	34.8	64.0	101741123000
2"	24.5	50.8	47.5	77.5	101742003000
2½"	27.5	63.5	60.2	91.0	101742123000
3"	28.5	76.2	72.9	106.0	101743003000
4"	29.5	101.6	97.4	130.0	101744003000



DN	A	B	C	D	Artikel 1.4404 / Ra<0,8µm
08 ISO	22.0	13.5	10.3	34.0	101750083000
10 ISO	22.0	17.2	14.0	34.0	101750103000
20 ISO	22.0	21.3	18.1	34.0	101750153000
25 ISO	22.0	26.9	23.7	50.5	101750203000
32 ISO	24.0	33.7	29.7	50.5	101750253000
40 ISO	24.0	42.4	38.4	64.0	101750323000
50 ISO	25.0	48.3	44.3	64.0	101750403000
65 ISO	27.0	60.3	56.3	91.0	101750503000
80 ISO	28.5	76.1	72.1	106.0	101750653000
100 ISO	31.0	88.9	84.3	119.0	101750803000



Koppelingen DIN 11853



Blinde Nutferrule

DN	A	C	Artikel 1.4435 / Ra<0,4µm
DN10	13.0	34.0	101920105000
DN15	13.0	34.0	101920155000
DN20	13.0	50.5	101920205000
DN25	13.0	50.5	101920255000
DN32	13.0	50.5	101920325000
DN40	13.0	64.0	101920405000
DN50	15.0	77.5	101920505000
DN65	15.0	91.0	101920655000
DN80	15.0	106.0	101920805000
DN100	15.0	130.0	101921005000
DN150	24.0	183.0	101921505000

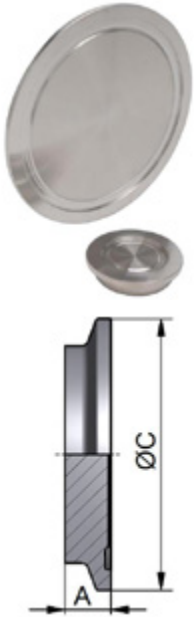
DN	A	C	Artikel 1.4435 / Ra<0,4µm
½"	13.0	34.0	101930125000
¾"	13.0	34.0	101930345000
1"	13.0	50.5	101931005000
1½"	13.0	64.0	101931125000
2"	15.0	77.5	101932005000
2½"	15.0	91.0	101932125000
3"	15.0	106.0	101933005000
4"	15.0	130.0	101934005000

Koppelingen DIN 11853

DN	A	C	Artikel 1.4435 / Ra<0,4µm
08 ISO	13.0	34.0	101940085000
10 ISO	13.0	34.0	101940105000
15 ISO	13.0	34.0	101940155000
20 ISO	13.0	50.5	101940205000
25 ISO	13.0	50.5	101940255000
32 ISO	13.0	64.0	101940325000
40 ISO	13.0	64.0	101940405000
50 ISO	15.0	91.0	101940505000
65 ISO	15.0	106.0	101940655000
80 ISO	15.0	119.0	101940805000
100 ISO	15.0	144.4	101941005000



Koppelingen DIN 11853



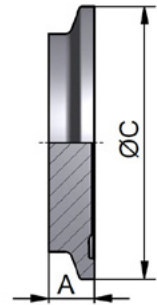
Blinde Bundferrule

DN	A	C	Artikel 1.4435 / Ra<0,4µm
DN10	11.5	34.0	101950105000
DN15	11.5	34.0	101950155000
DN20	11.5	50.5	101950205000
DN25	11.5	50.5	101950255000
DN32	11.5	50.5	101950325000
DN40	11.5	64.0	101950405000
DN50	13.5	77.5	101950505000
DN65	13.5	91.0	101950655000
DN80	13.5	106.0	101950805000
DN100	13.5	130.0	101951005000

DN	A	C	Artikel 1.4435 / Ra<0,4µm
½"	11.5	34.0	101960125000
¾"	11.5	34.0	101960345000
1"	11.5	50.5	101961005000
1½"	11.5	64.0	101961125000
2"	13.5	77.5	101962005000
2½"	13.5	91.0	101962125000
3"	13.5	106.0	101963005000
4"	13.5	130.0	101964005000

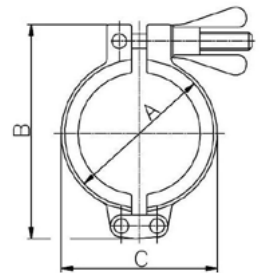
Koppelingen DIN 11853

DN	A	C	Artikel 1.4435 / Ra<0,4µm
08 ISO	11.5	34.0	101970085000
10 ISO	11.5	34.0	101970105000
15 ISO	11.5	34.0	101970155000
20 ISO	11.5	50.5	101970205000
25 ISO	11.5	50.5	101970255000
32 ISO	11.5	64.0	101970325000
40 ISO	11.5	64.0	101970405000
50 ISO	13.5	91.0	101970505000
65 ISO	13.5	106.0	101970655000
80 ISO	13.5	119.0	101970805000
100 ISO	13.5	114.4	101971005000

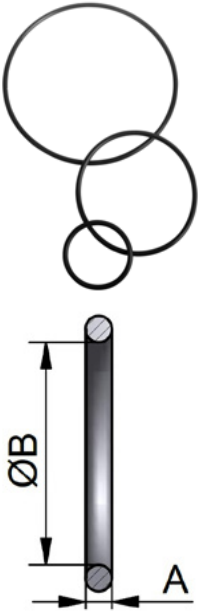


Klemband

DN	A	D	Artikel 304
25.0	25.0	25.0	188910121
34.0	34.0	34.0	188900201
50.5	50.5	50.5	188911001
64.0	64.0	64.0	188912001
77.5	77.5	77.5	188912121
91.0	91.0	91.0	188913001
106.0	106.0	106.0	188900801
119.0	119.0	119.0	188914001
130.0	130.0	130.0	188914121
155.0	155.0	155.0	188915121
183.0	183.0	183.0	188916581
233.5	233.5	233.5	188918581
268.0	268.0	268.0	188926851
167.0	167.0	167.0	188916001
217.4	217.4	217.4	188918001
319.0	319.0	319.0	188931931



Koppelingen DIN 11853



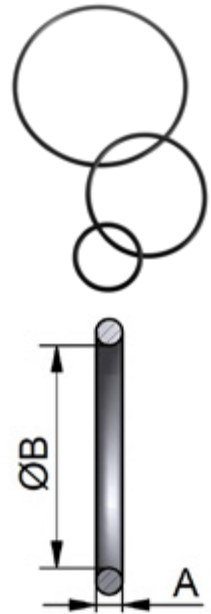
Afdichtingen

DN	A	B	Artikel EPDM	Artikel VITON	Artikel HNBR
1"	3.5	24.0	101181000300	101181000400	101181000700
1½"	5.0	37.0	101181120300	101181120400	101181120700
2"	5.0	50.0	101182000300	101182000400	101182000700
2½"	5.0	62.0	101182120300	101182120400	101182120700
3"	5.0	75.0	101183000300	101183000400	101183000700
4"	5.0	100.0	101184000300	101184000400	101184000700

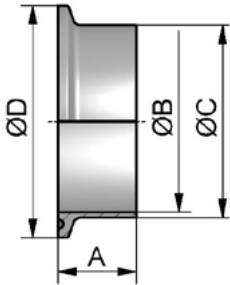
DN	A	B	Artikel EPDM	Artikel VITON	Artikel HNBR
DN10	3.5	12.0	101170100300	101170100400	101170100700
DN15	3.5	18.0	101170150300	101170150400	101170150700
DN20	3.5	22.0	101170200300	101170200400	101170200700
DN25	3.5	28.0	101170250300	101170250400	101170250700
DN32	5.0	34.0	101170320300	101170320400	101170320700
DN40	5.0	40.0	101170400300	101170400400	101170400700
DN50	5.0	52.0	101170500300	101170500400	101170500700
DN65	5.0	68.0	101170650300	101170650400	101170650700
DN80	5.0	83.0	101170800300	101170800400	101170800700
DN100	5.0	102.0	101171000300	101171000400	101171000700
DN125	5.0	127.0	101171250300	101171250400	101171250700
DN150	5.0	152.0	101171500300	101171500400	101171500700

Koppelungen DIN 11853

DN	A	B	Artikel EPDM	Artikel VITON
08 ISO	3.5	12.0	101190080300	101190080400
10 ISO	3.5	16.0	101190100300	101190100400
15 ISO	3.5	20.0	101190150300	101190150400
20 ISO	3.5	26.0	101190200300	101190200400
25 ISO	5.0	32.0	101190250300	101190250400
32 ISO	5.0	40.5	101190320300	101190320400
40 ISO	5.0	46.5	101190400300	101190400400
50 ISO	5.0	58.5	101190500300	101190500400
65 ISO	5.0	73.5	101190650300	101190650400
80 ISO	5.0	86.5	101190800300	101190800400
100 ISO	5.0	111.0	101191000300	101191000400



Lasferrules

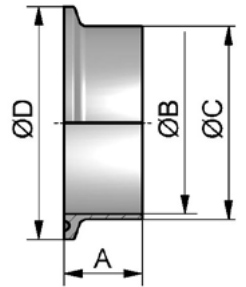


DN	A	B	C	D	E	Artikel 316
DN10	18.0	10.0	13.0	34.0	Ra<0,4µm	184970103
DN15	18.0	16.0	19.0	34.0	Ra<0,4µm	184970153
DN20	18.0	20.0	23.0	34.0	Ra<0,4µm	184970203
DN25	21.5	26.0	29.0	50.5	Ra<0,4µm	184970253
DN32	21.5	32.0	35.0	50.5	Ra<0,4µm	184970323
DN40	21.5	38.0	41.0	50.5	Ra<0,4µm	184970403
DN50	21.5	50.0	53.0	64.0	Ra<0,4µm	184970503
DN65	28.0	66.0	70.0	91.0	Ra<0,4µm	184900653
DN80	28.0	81.0	85.0	106.0	Ra<0,4µm	184900803
DN100	28.0	100.0	104.0	119.0	Ra<0,4µm	184901003
DN125	28.0	125.0	129.0	155.0	Ra<0,6µm	184901253
DN150	28.0	150.0	154.0	183.0	Ra<0,6µm	184901503
DN200	28.0	200.0	204.0	233.5	Ra<0,8µm	184902003
DN250	28.0	250.0	254.0	268.0	Ra<0,8µm	184902503
DN300	28.0	300.0	304.0	319.0	Ra<0,8µm	184903003

DN	A	B	C	D	E	Artikel 316
DN10	18.0	9.0	12.0	34.0	Ra<0,4µm	184900103
DN15	18.0	15.0	18.0	34.0	Ra<0,4µm	184900153
DN20	18.0	19.0	22.0	34.0	Ra<0,4µm	184900203
DN25	21.5	25.0	28.0	50.5	Ra<0,4µm	184900253
DN32	21.5	31.0	34.0	50.5	Ra<0,4µm	184900323
DN40	21.5	37.0	40.0	50.5	Ra<0,4µm	184900403
DN50	21.5	49.0	52.0	64.0	Ra<0,4µm	184900503
DN65	28.0	66.0	70.0	91.0	Ra<0,4µm	184900653
DN80	28.0	81.0	85.0	106.0	Ra<0,4µm	184900803
DN100	28.0	100.0	104.0	119.0	Ra<0,4µm	184901003
DN125	28.0	125.0	129.0	155.0	Ra<0,6µm	184901253
DN150	28.0	150.0	154.0	183.0	Ra<0,6µm	184901503
DN200	28.0	200.0	204.0	233.5	Ra<0,8µm	184902003
DN250	28.0	250.0	254.0	268.0	Ra<0,8µm	184902503
DN300	28.0	300.0	304.0	319.0	Ra<0,8µm	184903003

Koppelingen Tri-Clamp Koppelingen

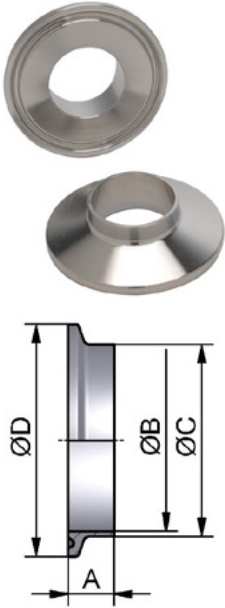
DN	A	B	C	D	E	Artikel 316
½"	12.7	9.4	12.7	25.0	Ra<0,4µm	184910123
¾"	12.7	15.75	19.05	25.0	Ra<0,4µm	184910343
1"	21.5	22.9	25.4	50.5	Ra<0,4µm	184911003
1"	21.5	22.1	25.4	50.5	Ra<0,4µm	184911005
1½"	21.5	35.1	38.1	50.5	Ra<0,4µm	184911123
2"	21.5	47.8	50.8	64.0	Ra<0,4µm	184912003
2"	28.0	47.8	50.8	64.0	Ra<0,4µm	184912005
2½"	28.0	60.5	63.5	77.5	Ra<0,4µm	184912123
3"	28.0	73.1	76.1	91.0	Ra<0,4µm	184913003
4"	28.0	97.6	101.6	119.0	Ra<0,4µm	184914003
6"	28.0	150.0	154.0	167.0	Ra<0,6µm	184916003
8"	28.0	200.0	204.0	217.4	Ra<0,8µm	184918003
12"	28.0	300.8	304.8	319.0	Ra<0,8µm	184922003



DN	A	B	C	D	E	Artikel 316
08 ISO	18.0	10.3	13.5	34.0	Ra<0,4µm	184980083
08 ISO	12.7	10.3	13.5	25.0	Ra<0,4µm	184980085
10 ISO	18.0	14.0	17.2	34.0	Ra<0,4µm	184980103
10 ISO	12.7	14.0	17.2	25.0	Ra<0,4µm	184980105
15 ISO	18.0	18.1	21.3	34.0	Ra<0,4µm	184980153
15 ISO	21.5	18.1	21.3	50.5	Ra<0,4µm	184980155
20 ISO	21.5	23.7	26.9	50.5	Ra<0,4µm	184980203
25 ISO	21.5	29.7	33.7	50.5	Ra<0,4µm	184980253
32 ISO	21.5	38.4	42.4	64.0	Ra<0,4µm	184980325
32 ISO	21.5	38.4	42.4	50.5	Ra<0,4µm	184980323
40 ISO	21.5	44.3	48.3	64.0	Ra<0,4µm	184980403
50 ISO	28.0	56.3	60.3	77.5	Ra<0,4µm	184980503
65 ISO	28.0	72.1	76.1	91.0	Ra<0,4µm	184980653
80 ISO	28.0	84.9	88.9	106.0	Ra<0,4µm	184980803
100 ISO	28.0	110.3	114.3	130.0	Ra<0,6µm	184981003
125 ISO	28.0	135.7	139.7	155.0	Ra<0,6µm	184981253
150 ISO	28.0	163.1	168.3	183.0	Ra<0,6µm	184981503
200 ISO	28.0	213.9	219.1	233.5	Ra<0,8µm	184982003

Koppelingen

Tri-Clamp Koppelingen



Kort

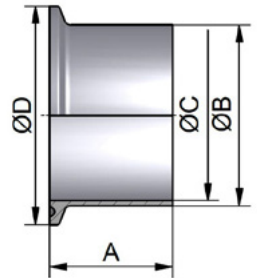
DN	A	B	C	D	Artikel 304	Artikel 316
DN25	13.0	26.0	29.0	50.5	185000251	185000253
DN32	13.0	32.0	35.0	50.5	185000321	185000323
DN40	13.0	38.0	41.0	50.5	185000401	185000403
DN50	13.0	50.0	53.0	64.0	185000501	185000503
DN65	13.0	66.0	70.0	91.0	185000651	185000653
DN80	13.0	81.0	85.0	106.0	185000801	185000803
DN100	13.0	100.0	104.0	119.0	185001001	185001003

DN	A	B	C	D	Artikel 304	Artikel 316
1"	13.0	22.9	25.4	50.5	185011001	185011003
1½"	13.0	35.1	38.1	50.5	185011121	185011123
2"	13.0	47.8	50.8	64.0	185012001	185012003
2½"	13.0	60.5	63.5	77.5	185012121	185012123
3"	13.0	72.1	76.1	91.0	185013001	185013003
4"	13.0	97.6	101.06	119.0	185014001	185014003

Koppelingen Tri-Clamp Koppelingen

Lang

DN	A	B	C	D	Artikel 1.4404	Artikel 1.4435
DN08	28.6	13.5	10.3	34.0	101550088000	
DN10	28.6	13.0	10.0	34.0	101530108000	101530104000
DN15	28.6	19.0	16.0	34.0	101530158000	101530154000
DN20	28.6	23.0	20.0	34.0	101530208000	101530204000
DN25	36.0	29.0	26.0	50.5	101530258000	101530254000
DN32	36.0	35.0	32.0	50.5	101530328000	101530324000
DN40	36.0	41.0	38.0	50.5	101530408000	101530404000
DN50	36.0	53.0	50.0	64.0	101530508000	101530504000
DN65	48.0	70.0	66.0	91.0	101530658000	101530654000
DN80	48.0	85.0	81.0	106.0	101530808000	101530804000
DN100	48.0	104.0	100.0	119.0	101531008000	101531004000



DN	A	B	C	D	Artikel 1.4404	Artikel 1.4435
½"	28.6	12.7	9.4	25.0	101560128000	101560124000
¾"	28.6	19.05	15.75	25.0	101560348000	101560344000
1"	36.0	25.4	22.1	50.5	101561008000	101561004000
1½"	36.0	38.1	34.8	50.5	101561128000	101561124000
2"	36.0	50.8	47.5	64.0	101562008000	101562004000
2½"	36.0	63.5	60.2	77.5	101562128000	101562124000
3"	48.0	76.2	72.9	91.0	101563008000	101563004000
4"	48.0	101.6	97.4	119.0	101564008000	101564004000

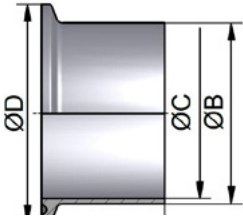


Koppelingen

Tri-Clamp Koppelingen



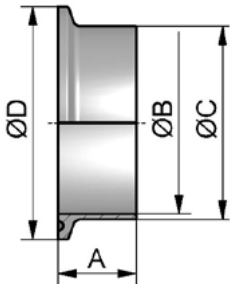
INCH ASME-BPE



DN	A	B	C	D	Artikel 1.4435 Ra<0,4µm
½"	44.5	12.7	9.4	25.0	101540125000
¾"	44.5	19.05	15.75	25.0	101540345000
1"	44.5	25.4	22.1	50.5	101541005000
1½"	44.5	38.1	34.8	50.5	101541125000
2"	57.2	50.8	47.5	64.0	101542005000
2½"	57.2	63.5	60.2	77.5	101542125000
3"	57.2	76.2	72.9	91.0	101543005000
4"	57.2	101.6	97.4	119.0	101544005000



ISO 2852

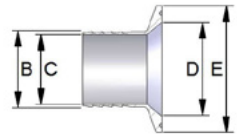


DN	A	B	C	D	Artikel 316
1"	21.5	22.6	25.6	50.5	184880253
1½"	21.5	35.6	38.6	50.5	184880383
2"	21.5	48.6	51.6	64.0	184880513
2½"	21.5	60.3	64.1	77.5	184880633
3"	21.5	72.9	76.7	91.0	184880763
4"	21.5	97.6	102.5	119.0	184881013

Adapters

TC - Slangtule

DN	A	B	C	D	E	Artikel 316
FI.25.0	32.0	6.4	3.4	10.0	25.4	180010123064
FI.25.0	32.0	9.5	6.5	10.0	25.4	180010123095
FI.25.0	32.0	12.7	9.7	10.0	25.4	180010123127
FI.25.0	32.0	19.0	16.0	10.0	25.4	180010123190
FI.25.0	32.0	6.4	3.4	16.0	25.4	180010343064
FI.25.0	32.0	9.5	6.5	16.0	25.4	180010343095
FI.25.0	32.0	12.7	9.7	16.0	25.4	180010343127
FI.25.0	32.0	19.0	16.0	16.0	25.4	180010343190
FI.50.5	40.0	6.4	3.4	22.5	50.5	180011003064
FI.50.5	40.0	9.5	6.5	22.5	50.5	180011003095
FI.50.5	40.0	12.7	9.7	22.5	50.5	180011003127
FI.50.5	40.0	19.0	16.0	22.5	50.5	180011003190
FI.50.5	40.0	26.0	23.0	22.5	50.5	180011003260
FI.50.5	40.0	9.5	6.5	35.0	50.5	180011123095
FI.50.5	40.0	12.7	9.7	35.0	50.5	180011123127
FI.50.5	40.0	19.0	16.0	35.0	50.5	180011123190
FI.50.5	40.0	22.0	19.0	35.0	50.5	180011123220
FI.50.5	40.0	26.0	23.0	35.0	50.5	180011123260
FI.50.5	40.0	38.1	35.0	35.0	50.5	180011123381
FI.64.0	60.0	12.7	9.7	48.0	64.0	180012003127
FI.64.0	60.0	19.0	16.0	48.0	64.0	180012003190
FI.64.0	60.0	26.0	23.0	48.0	64.0	180012003260
FI.64.0	60.0	38.1	35.0	48.0	64.0	180012003381
FI.64.0	60.0	50.8	47.0	48.0	64.0	180012003508

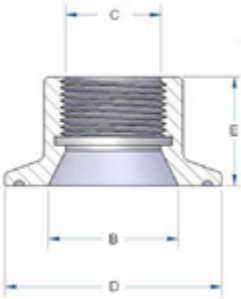


Koppelingen

Tri-Clamp Koppelingen



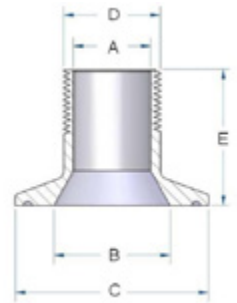
Opschroef ferrule



DN	B	C	D	E	Artikel 316
1/2" x G1/8"	10.0	1/8" BSPP	25.4	25.0	182010123013
1/2" x G1/4"	10.0	1/4" BSPP	25.4	25.0	182010123023
1/2" x G3/8"	10.0	3/8" BSPP	25.4	25.0	182010123033
1/2" x G1/2"	10.0	1/2" BSPP	25.4	30.0	182010123043
1/2" x G3/4"	10.0	3/4" BSPP	25.4	30.0	182010123053
3/4" x G1/8"	16.0	1/8" BSPP	25.4	25.0	182010343013
3/4" x G1/4"	16.0	1/4" BSPP	25.4	25.0	182010343023
3/4" x G3/8"	16.0	3/8" BSPP	25.4	25.0	182010343033
3/4" x G1/2"	16.0	1/2" BSPP	25.4	30.0	182010343043
3/4" x G3/4"	16.0	3/4" BSPP	25.4	30.0	182010343053
1" x G1/8"	22.0	1/8" BSPP	50.5	25.0	182011003013
1" x G1/4"	22.0	1/4" BSPP	50.5	25.0	182011003023
1" x G3/8"	22.0	3/8" BSPP	50.5	25.0	182011003033
1" x G1/2"	22.0	1/2" BSPP	50.5	25.0	182011003043
1" x G3/4"	22.0	3/4" BSPP	50.5	25.0	182011003053
1" x G1"	22.0	1" BSPP	50.5	25.0	182011003063
1.5" x G1/8"	35.0	1/8" BSPP	50.5	25.0	182011123013
1.5" x G1/4"	35.0	1/4" BSPP	50.5	25.0	182011123023
1.5" x G3/8"	35.0	3/8" BSPP	50.5	25.0	182011123033
1.5" x G1/2"	35.0	1/2" BSPP	50.5	25.0	182011123043
1.5" x G3/4"	35.0	3/4" BSPP	50.5	25.0	182011123053
1.5" x G1"	35.0	1" BSPP	50.5	25.0	182011123063
1.5" x G1½"	35.0	1.1/2" BSPP	50.5	45.0	182011123083
2" x G1¼"	47.6	1¼" BSPP	64.0	50.0	182012003073
2" x G1/2"	47.6	1/2" BSPP	64.0	25.0	182012003043
2" x G3/4"	47.6	3/4" BSPP	64.0	25.0	182012003053
2" x G1"	47.6	1" BSPP	64.0	30.0	182012003063
2" x G1½"	47.6	1.1/2" BSPP	64.0	30.0	182012003083
2" x G2"	47.6	2" BSPP	64.0	40.0	182012003093

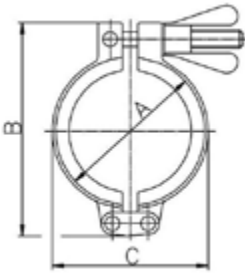
Inschroef ferrule

DN	B	C	D	E	Artikel 316
DN10 x G1/2"	10.0	1/2" BSPT	34.0	30.0	181000103043
DN15 x G1/2"	16.0	1/2" BSPT	34.0	30.0	181000153043
DN15 x G3/4"	16.0	3/4" BSPT	34.0	30.0	181000153053
DN20 x G3/4"	20.0	3/4" BSPT	34.0	30.0	181000203053
1/2" x G1/8"	10.0	1/8" BSPT	25.4	30.0	181010123013
1/2" x G1/4"	10.0	1/4" BSPT	25.4	30.0	181010123023
1/2" x G3/8"	10.0	3/8" BSPT	25.4	30.0	181010123033
1/2" x G1/2"	10.0	1/2" BSPT	25.4	32.0	181010123043
1/2" x G3/4"	10.0	3/4" BSPT	25.4	35.0	181010123053
3/4" x G1/8"	16.0	1/8" BSPT	25.4	30.0	181010343013
3/4" x G1/4"	16.0	1/4" BSPT	25.4	30.0	181010343023
3/4" x G3/8"	16.0	3/8" BSPT	25.4	30.0	181010343033
3/4" x G1/2"	16.0	1/2" BSPT	25.4	32.0	181010343043
3/4" x G3/4"	16.0	3/4" BSPT	25.4	35.0	181010343053
1" x G1/4"	22.0	1/4" BSPT	50.5	30.0	181011003023
1" x G3/8"	22.0	3/8" BSPT	50.5	30.0	181011003033
1" x G1/2"	22.0	1/2" BSPT	50.5	35.0	181011003043
1" x G3/4"	22.0	3/4" BSPT	50.5	35.0	181011003053
1" x G1"	22.0	1" BSPT	50.5	36.0	181011003063
1.5" x G1/2"	35.0	1/2" BSPT	50.5	35.0	181011123043
1.5" x G3/4"	35.0	3/4" BSPT	50.5	35.0	181011123053
1.5" x G1"	35.0	1" BSPT	50.5	36.0	181011123063
1.5" x G1½"	35.0	1.1/2" BSPT	50.5	40.0	181011123083
2" x G1"	47.6	1" BSPT	64.0	40.0	181012003063
2" x G1½"	47.6	1.1/2" BSPT	64.0	40.0	181012003083
2" x G2"	47.6	2" BSPT	64.0	40.0	181012003093
2" x G1"	60.2	2" BSPT	77.5	45.0	181012123093



Klembanden

Zwaar (2-delig)

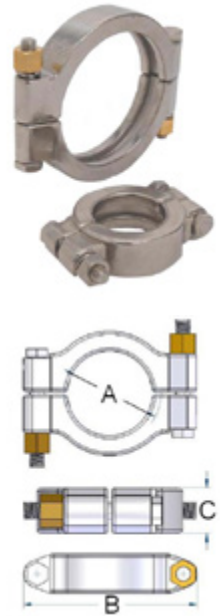


DN	A	D	Artikel 304
25.0	25.0	25.0	188910121
34.0	34.0	34.0	188900201
50.5	50.5	50.5	188911001
64.0	64.0	64.0	188912001
77.5	77.5	77.5	188912121
91.0	91.0	91.0	188913001
106.0	106.0	106.0	188900801
119.0	119.0	119.0	188914001
130.0	130.0	130.0	188914121
155.0	155.0	155.0	188915121
167.0	167.0	167.0	188916001
183.0	183.0	183.0	188916581
217.4	217.4	217.4	188918001
233.5	233.5	233.5	188918581
268.0	268.0	268.0	188926851
319.0	319.0	319.0	188931931

Koppelingen Tri-Clamp Koppelingen

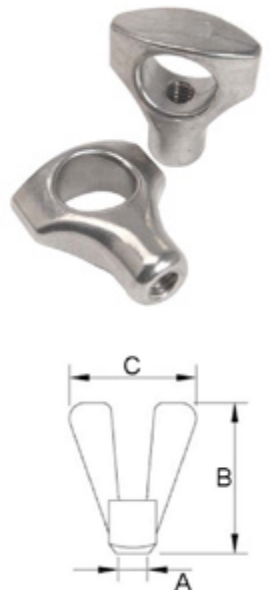
High Pressure (2-delig)

DN	A	D	Artikel 304
25.0	25.0	25.0	188970121
35.0	35.0	35.0	188970201
50.5	50.5	50.5	188971001
64.0	64.0	64.0	188972001
77.5	77.5	77.5	188972121
91.0	91.0	91.0	188973001
106.0	106.0	106.0	188973121
119.0	119.0	119.0	188974001
155	155.0	155.0	188975121
167.0	167.0	167.0	188976001
183.0	183.0	183.0	188976581



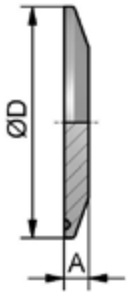
Losse Moeren

DN	A	Artikel 304
Flensmaat 50,5 t/m 167,0	5/16" UNC	188800002
Flensdiameter vanaf 167,0	M10	188800004
Flensdiameter vanaf 167,0	M10	188800009
t/m Flensdiameter 155,0	5/16" UNC	188800011



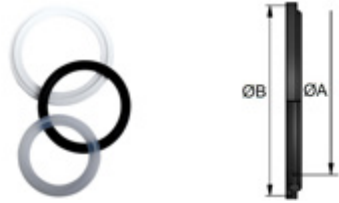
TC-Blindplaten

TC-Blindplaat



DN	A	D	E	Artikel 316
25.0	6.35	25.0	Ra<0.4µm	186910123
34.0	6.35	34.0	Ra<0.4µm	186900203
50.5	6.35	50.5	Ra<0.4µm	186911123
64.0	6.35	64.0	Ra<0.4µm	186912003
77.5	6.35	77.5	Ra<0.4µm	186912123
91.0	6.35	91.0	Ra<0.4µm	186913003
106.0	6.35	106.0	Ra<0.4µm	186900803
119.0	8.0	119.0	Ra<0.4µm	186914003
130.0	8.0	130.0	Ra<0.4µm	186901003
155.0	8.0	155.0	Ra<0.4µm	186901253
167.0	14.0	167.0	Ra<0.4µm	186916003
183.0	14.0	183.0	Ra<0.4µm	186901503
217.4	14.0	217.4	Ra<0.8µm	186918003
233.5	14.0	233.5	Ra<0.8µm	186902003
268.0	14.0	268.0	Ra<0.8µm	186902503
319.0	14.0	319.0	Ra<0.8µm	186903003

Afdichtingen



DN	A	B	Artikel Siliconen	Artikel NBR	Artikel EPDM	Artikel VITON
DN10	10.2	34.0	189000100100	189000100200	189000100300	189000100400
DN15	16.2	34.0	189000150100	189000150200	189000150300	189000150400
DN20	20.2	34.0	189000200100	189000200200	189000200300	189000200400
DN25	26.2	50.5	189000250100	189000250200	189000250300	189000250400
DN32	32.2	50.5	189000320100	189000320200	189000320300	189000320400
DN40	38.2	50.5	189000400100	189000400200	189000400300	189000400400
DN50	50.2	64.0	189000500100	189000500200	189000500300	189000500400
DN65	66.2	91.0	189000650100	189000650200	189000650300	189000650400
DN80	81.2	106.0	189000800100	189000800200	189000800300	189000800400
DN100	100.2	119.0	189001000100	189001000200	189001000300	189001000400
DN125	125.2	155.0	189001250100	189001250200	189001250300	189001250400
DN150	150.2	183.0	189001500100	189001500200	189001500300	189001500400
DN200	200.2	233.5	189002000100	189002000200	189002000300	189002000400
DN300	300.2	319.0	189003000100	189003000200	189003000300	189003000400

DN	A	B	Artikel Siliconen	Artikel NBR	Artikel EPDM	Artikel VITON
½"	10.6	21.8	189010120100	189010120200	189010120300	189010120400
¾"	16.0	21.8	189010340100	189010340200	189010340300	189010340400
1"	23.1	50.5	189011000100	189011000200	189011000300	189011000400
1½"	35.3	50.5	189011120100	189011120200	189011120300	189011120400
2"	48.0	64.0	189012000100	189012000200	189012000300	189012000400
2½"	60.7	77.5	189012120100	189012120200	189012120300	189012120400
3"	72.3	91.0	189013000100	189013000200	189013000300	189013000400
4"	97.8	119.0	189014000100	189014000200	189014000300	189014000400
6"	147.3	167.0	189016000100		189016000300	189016000400
8"	200.0	217.4	189018000100		189018000300	189018000400

Koppelingen

Tri-Clamp Koppelingen

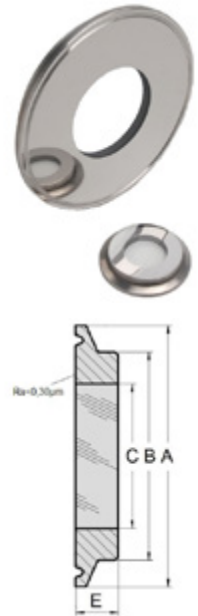
DN	A	B	Artikel Siliconen	Artikel EPDM	Artikel Viton	Artikel PTFE
08 ISO	10.5	34.0	189080080100	189080080300	189080080400	189080080500
08 ISO	10.5	21.8	189180080100	189180080300	189180080400	189180080500
10 ISO	14.2	34.0	189080100100	189080100300	189080100400	189080100500
10 ISO	14.2	21.8	189180100100	189180100300	189180100400	189180100500
15 ISO	18.3	50.5	189180150100	189180150300	189080150400	189180150500
20 ISO	23.9	50.5	189080200100	189080200300	189080200400	189080200500
25 ISO	29.9	50.5	189080250100	189080250300	189080250400	189080200500
32 ISO	38.6	50.5	189080320100	189180320300	189080320400	189080320500
32 ISO	38.6	64.0	189180320100	189080320300	189180320400	189180320500
40 ISO	44.5	64.0	189080400100	189080400300	189080400400	189080400500
50 ISO	56.5	77.5	189080500100	189080500300	189080500400	189080500500
65 ISO	72.3	91.0	189080650100	189080650300	189080650400	189080650500
80 ISO	85.1	106.0	189080800100	189080800300	189080400400	189080800500
100 ISO	110.5	130.0	189081000100	189081000300	189081000400	189081000500
125 ISO	134.7	155.0	189081250100	189081250300	189081250400	189081250500
150 ISO	163.3	183.0	189081500100	189081500300	189081500400	189081500500
200 ISO	214.1	233.5	189082000100	189082000300	189082000400	189082000500



Kijkglazen

TC Kijkglas

DN	A	B	C	D	E	Artikel Metaal- versmolten
34.0	27.5	21.0	12.0	34.0	7.0	186100100100
50.5	43.5	41.0	25.0	50.5	10.0	186111120100
64.0	56.5	52.0	30.0	64.0	10.0	186112000100
77.5	70.5	69.0	35.0	77.5	12.0	186112120100
91.0	83.5	76.0	40.0	91.0	10.0	186113000100
106.0	97.0	90.0	50.0	106.0	10.0	186100800100
119.0	110.0	101.0	55.0	119.0	12.0	186101000100
155.0	146.0	138.0	70.0	155.0	16.0	186101250100
167.0	156.5	152.0	75.0	167.0	16.0	186116000100
183.0	174.3	160.0	75.0	183.0	16.0	186101500100
233.5	225.1	210.0	100.0	233.5	18.0	186102000100
287.5	287.5	266.0	120.0	287.5	20.0	186102500100
338.3	328.4	316.0	140.0	338.3	22.0	186103000100



DN	A	B	C	D	Artikel Polycarbonaat
50.5	12.0	34.0	35.0	50.5	186311120
64.0	12.0	47.0	48.0	64.0	186312000
77.5	12.0	59.0	60.0	77.5	186312120
91.0	12.0	65.0	66.0	91.0	186313000
106.0	12.0	80.0	81.0	106.0	186313120
119.0	12.0	97.0	98.0	119.0	186314000
130.0	12.0	109.0	110.0	130.0	186314120
183.0	12.0	159.0	160.0	183.0	186315120



Lasfittingen

Bochten 106

T-stukken 114

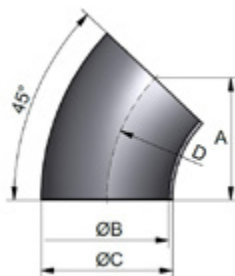
Reduceerstukken 120



Lasfittingen Bochten

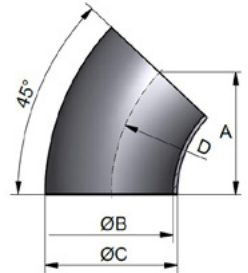
45° Lasbochten

volgens DIN 11852



DN	A	B	C	D	Artikel 304 Blank	Artikel 316 Blank
DN10	17.0	10.0	13.0	26.0	322101301510	322101301530
DN15	23.0	16.0	19.0	35.0	322101901510	322101901530
DN20	27.0	20.0	23.0	40.0	322102301510	322102301530
DN25	34.0	26.0	29.0	50.0	322102901510	322102901530
DN32	37.0	32.0	35.0	55.0	322103501510	322103501530
DN40	41.0	38.0	41.0	60.0	322104101510	322104101530
DN50	48.0	50.0	53.0	70.0	322105301510	322105301530
DN65	55.0	66.0	70.0	80.0	322107002010	322107002030
DN80	62.0	81.0	85.0	90.0	322108502010	322108502030
DN100	69.6	100.0	104.0	100.0	322110402010	322110402030
DN125	131.0	125.0	129.0	187.5	322112902010	322112902030
DN150	157.0	150.0	154.0	225.0	322115402010	322115402030
DN200	209.0	200.0	204.0	300.0	322120402010	322120402030

Lasfittingen Bochten

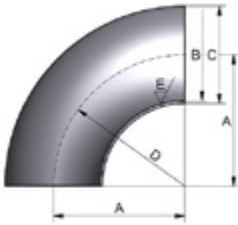


DN	A	B	C	D	Artikel 304 Blank	Artikel 316 Blank
DN10	17.0	9.0	12.0	26.0	322101201510	322101201530
DN15	24.0	15.0	18.0	35.0	322101801510	322101801530
DN20	27.0	19.0	22.0	40.0	322102201510	322102201530
DN25	34.0	25.0	28.0	50.0	322102801510	322102801530
DN32	37.0	31.0	34.0	55.0	322103401510	322103401530
DN40	41.0	37.0	40.0	60.0	322104001510	322104001530
DN50	48.0	49.0	52.0	70.0	322105201510	322105201530
DN65	55.5	66.0	70.0	80.0	322107002010	322107002030
DN80	62.0	81.0	85.0	90.0	322108502010	322108502030
DN100	69.6	100.0	104.0	100.0	322110402010	322110402030
DN125	131.0	125.0	129.0	187.5	322112902010	322112902030
DN150	157.0	150.0	154.0	225.0	322115402010	322115402030
DN200	209.0	200.0	204.0	300.0	322120402010	322120402030

DN	A	B	C	D	Artikel 316 Geslepen
DN15	23.7	16.0	19.0	35.0	322101901533
DN20	27.2	20.0	23.0	40.0	322102301533
DN25	34.3	26.0	29.0	50.0	322102901533
DN32	37.8	32.0	35.0	55.0	322103501533
DN40	41.4	38.0	41.0	60.0	322104101533
DN50	48.4	50.0	53.0	70.0	322105301533
DN65	55.5	66.0	70.0	80.0	322107002033
DN80	62.6	81.0	85.0	90.0	322108502033
DN100	69.6	100.0	104.0	100.0	322110402033



Lasfittingen Bochten



90° Lasbochten

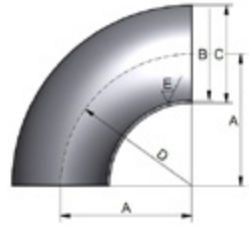
volgens DIN 11852

DN	A	B	C	D	Artikel 304 Blank	Artikel 316 Blank
DN10	26.0	10.0	13.0	26.0	322201301510	322201301530
DN15	35.0	16.0	19.0	35.0	322201901510	322201901530
DN20	40.0	20.0	23.0	40.0	322202301510	322202301530
DN25	50.0	26.0	29.0	50.0	322202901511	322202901531
DN32	55.0	32.0	35.0	55.0	322203501511	322203501531
DN40	60.0	38.0	41.0	60.0	322204101511	322204101531
DN50	70.0	50.0	53.0	70.0	322205301511	322205301531
DN65	80.0	66.0	70.0	80.0	322207002011	322207002031
DN80	90.0	81.0	85.0	90.0	322208502011	322208502031
DN100	100.0	100.0	104.0	100.0	322210402011	322210402031

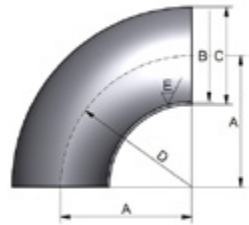
DN	A	B	C	D	Artikel 304 Blank	Artikel 316 Blank
1"	27.5	22.9	25.4	27.5	322202541210	322202541230
1¼"	35.0	28.8	31.8	35.0	322203181210	322203181230
1½"	45.0	35.1	38.1	45.0	322203811510	322203811530
2"	67.5	47.8	50.8	67.5	322205081510	322205081530
2½"	82.5	60.2	63.5	82.5	322206351510	322206351530
3"	95.0	72.8	76.1	95.0	322207611510	322207611530
4"	133.5	97.4	101.6	133.5	322210162010	322210162030

Lasfittingen Bochten

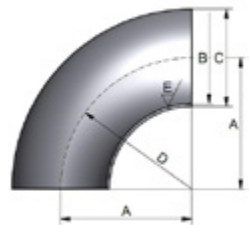
DN	A	B	C	D	Artikel 304 Blank - Ra<0,8µm	Artikel 316 Blank - Ra<0,8µm
1"	44.0	22.2	25.4	37.5	322202541611	322202541631
1½"	64.0	34.9	38.1	57.0	322203811611	322203811631
2"	89.0	47.6	50.8	76.5	322205081611	322205081631
2½"	114.0	60.3	63.5	95.3	322206351611	322206351631
3"	155.0	72.9	76.1	134.0	322207611611	322207611631
4"	174.0	97.4	101.6	153.0	322210162111	322210162131



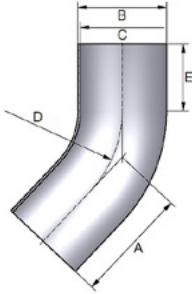
DN	A	B	C	D	Artikel 304 Geslepen	Artikel 316 Geslepen
DN10	26.0	10.0	13.0	26.0	322201301513	322201201533
DN15	35.0	16.0	19.0	35.0	322201901513	322201801533
DN20	40.0	20.0	23.0	40.0	322202301513	322202201533
DN25	50.0	26.0	29.0	50.0	322202901513	322202801533
DN32	55.0	32.0	35.0	55.0	322203501513	322203401533
DN40	60.0	38.0	41.0	60.0	322204101513	322204001533
DN50	70.0	50.0	53.0	70.0	322205301513	322205201533
DN65	80.0	66.0	70.0	80.0	322207002013	322207002033
DN80	90.0	81.0	85.0	90.0	322208502013	322208502033
DN100	100.0	100.0	104.0	100.0	322210402013	322210402033
DN125	187.0	125.0	129.0	187.0	322212902013	322212902033
DN150	225.0	150.0	154.0	225.0	322215402013	322215402033



DN	A	B	C	D	Artikel 304 Geslepen	Artikel 316 Geslepen
1"	44.0	22.2	25.4	37.5	322202541613	322202541633
1½"	64.0	34.9	38.1	57.0	322203811613	322203811633
2"	89.0	47.6	50.8	76.5	322205081613	322205081633
2½"	114.0	60.3	63.5	95.3	322206351613	322206351633
3"	134.0	72.9	76.1	114.0	322207611613	322207611633
4"	174.0	97.4	101.6	153.0	322210162113	322210162133



Lasfittingen Bochten



45° Walsbochten

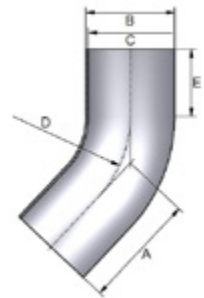
volgens DIN 11852

DN	A	B	C	D	Artikel 316 Geslepen
DN10	35.8	13.0	10.0	26.0	333101301533
DN15	39.5	19.0	16.0	35.0	333101901533
DN20	41.6	23.0	20.0	40.0	333102301533
DN25	60.7	29.0	26.0	50.0	333102901533
DN32	62.8	35.0	32.0	55.0	333103501533
DN40	64.9	41.0	38.0	60.0	333104101533
DN50	69.0	53.0	50.0	70.0	333105301533
DN65	73.1	70.0	66.0	80.0	333107002033
DN80	92.3	85.0	81.0	90.0	333108502033
DN100	96.4	104.0	100.0	100.0	333110402033
DN125	135.2	129.0	125.0	187.5	333112902033
DN150	193.2	154.0	150.0	225.0	333115402033

DN	A	B	C	D	Artikel 316 Geslepen
1"	25.4	22.2	34.7	25.0	333102541633
1½"	38.1	34.9	41.0	38.0	333103811633
2"	50.8	47.6	42.2	51.0	333105081633
2½"	63.5	60.3	54.5	63.5	333106351633
3"	76.1	72.9	50.5	76.0	333107611633
4"	101.6	97.6	59.2	153.0	333110162033

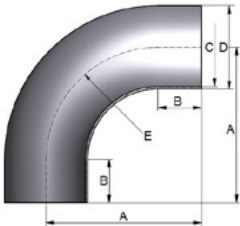
Lasfittingen Bochten

DN	A	B	C	D	Artikel 304 Blank	Artikel 316 Blank
DN10	35.8	13.0	10.0	26.0	333101301510	333101301530
DN15	39.5	19.0	16.0	35.0	333101901510	333101901530
DN20	41.6	23.0	20.0	40.0	333102301510	333102301530
DN25	60.7	29.0	26.0	50.0	333102901510	333102901530
DN32	62.8	35.0	32.0	55.0	333103501510	333103501530
DN40	64.9	41.0	38.0	60.0	333104101510	333104101530
DN50	69.0	53.0	50.0	70.0	333105301510	333105301530
DN65	73.1	70.0	66.0	80.0	333107002010	333107002030
DN80	92.3	85.0	81.0	90.0	333108502010	333108502030
DN100	96.4	104.0	100.0	100.0	333110402010	333110402030
DN125	135.2	129.0	125.0	187.5	333112902010	333112902030



DN	A	B	C	D	Artikel 316 Blank - Ra<0,8µm
1"	25.4	22.2	14.6	37.5	333102541631
1½"	38.1	34.9	17.7	57.0	333103811631
2"	50.8	47.6	27.0	76.5	333105081631
2½"	63.5	60.3	36.7	95.3	333106351631
3"	76.1	72.9	42.9	114.0	333107611631
4"	101.6	97.6	59.2	153.0	333110162031

Lasfittingen Bochten



90° Walsbochten

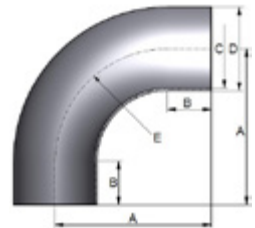
volgens DIN 11852

DN	A	B	C	D	Artikel 316 Geslepen
DN10	51.0	25.0	10.0	13.0	333201301533
DN15	60.0	25.0	16.0	19.0	333201901533
DN20	65.0	25.0	20.0	23.0	333202301533
DN25	90.0	40.0	26.0	29.0	333202901533
DN32	95.0	40.0	32.0	35.0	333203501533
DN40	100.0	40.0	38.0	41.0	333204101533
DN50	110.0	40.0	50.0	53.0	333205301533
DN65	120.0	40.0	66.0	70.0	333207002033
DN80	145.0	55.0	81.0	85.0	333208502033
DN100	155.0	55.0	100.0	104.0	333210402033
DN125	270.0	82.5	125.0	129.0	333212902033
DN150	325.0	100.0	150.0	154.0	333215402033

DN	A	B	C	D	Artikel 304 Geslepen	Artikel 316 Geslepen
1"	65.0	27.5	22.2	25.4	333202541613	333202541633
1½"	85.0	28.0	34.9	38.1	333203811613	333203811633
2"	110.0	33.5	47.6	50.8	333205081613	333205081633
2½"	135.0	39.7	60.3	63.5	333206351613	333206351633
3"	155.0	40.8	72.9	76.1	333207611613	333207611633
4"	195.0	42.5	97.6	101.6	333210162013	333210162033

Lasfittingen Bochten

DN	A	B	C	D	Artikel 304 Blank - Ra<0,8µm	Artikel 316 Blank - Ra<0,8µm
DN10	38.0	12.0	10.0	13.0	333201301511	333201301531
DN15	47.0	12.0	16.0	19.0	333201901511	333201901531
DN20	52.0	12.0	20.0	23.0	333202301511	333202301531
DN25	70.0	20.0	26.0	29.0	333202901511	333202901531
DN32	78.0	23.0	32.0	35.0	333203501511	333203501531
DN40	85.0	25.0	38.0	41.0	333204101511	333204101531
DN50	97.0	27.0	50.0	53.0	333205301511	333205301531
DN65	110.0	30.0	66.0	70.0	333207002011	333207002031
DN80	118.0	28.0	81.0	85.0	333208502011	333208502031
DN100	140.0	40.0	100.0	104.0	333210402011	333210402031

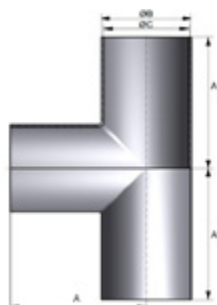


DN	A	B	C	D	Artikel 304 Blank - Ra<0,8µm
1"	65.0	27.5	22.2	25.4	333202541611
1½"	85.0	28.0	34.9	38.1	333203811611
2"	110.0	33.5	47.6	50.8	333205081611
2½"	135.0	39.7	60.3	63.5	333206351611
3"	155.0	40.8	72.9	76.1	333207611611
4"	195.0	42.5	97.6	101.6	333210162011



Voeding

T-Stuk Lang

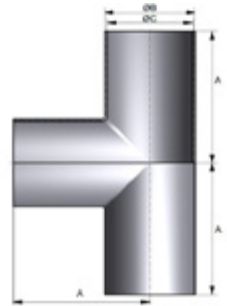


DN	A	B	C	Artikel 304 Blank	Artikel 316 Blank
DN10	26.0	10.0	13.0	422201301510	422201301530
DN15	35.0	16.0	19.0	422201901510	422201901530
DN20	40.0	20.0	23.0	422202301510	422202301530
DN25	50.0	26.0	29.0	422202901510	422202901530
DN32	55.0	32.0	35.0	422203501510	422203501530
DN40	60.0	38.0	41.0	422204101510	422204101530
DN50	70.0	50.0	53.0	422205301510	422205301530
DN65	80.0	66.0	70.0	422207002010	422207002030
DN80	90.0	81.0	85.0	422208502010	422208502030
DN100	100.0	100.0	104.0	422210402010	422210402030
DN125	187.5	125.0	129.0	422212902010	422212902030
DN150	225.0	150.0	154.0	422215402010	422215402030
DN200	300.0	200.0	204.0	422220402010	422220402030
DN250	375.0	250.0	254.0	422225402010	422225402030

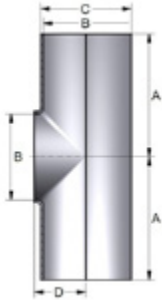
DN	A	B	C	Artikel 304 Blank - Ra<0,8µm	Artikel 316 Blank - Ra<0,8µm	Artikel 304 Geslepen	Artikel 316 Geslepen
DN10	26.0	10.0	13.0			422201301513	422201301533
DN15	35.0	16.0	19.0			422201901513	422201901533
DN20	40.0	20.0	23.0			422202301513	422202301533
DN25	50.0	26.0	29.0	422202901511	422202901531	422202901513	422202901533
DN32	55.0	32.0	35.0	422203501511	422203501531	422203501513	422203501533
DN40	60.0	38.0	41.0	422204101511	422204101531	422204101513	422204101533
DN50	70.0	50.0	53.0	422205301511	422205301531	422205301513	422205301533
DN65	80.0	66.0	70.0	422207002011	422207002031	422207002013	422207002033
DN80	90.0	81.0	85.0	422208502011	422208502031	422208502013	422208502033
DN100	100.0	100.0	104.0	422210402011	422210402031	422210402013	422210402033

Lasfittingsen T-Stukken

DN	A	B	C	Artikel 304 Blank - Ra 0,8	Artikel 316 Blank - Ra 0,8
1"	44.0	22.2	25.4	422202541611	422202541631
1½"	64.0	34.9	38.1	422203811611	422203811631
2"	89.0	47.6	50.8	422205081611	422205081631
2½"	114.0	60.3	63.5	422206351611	422206351631
3"	134.0	72.9	76.1	422207611611	422207611631
4"	174.0	97.6	101.6	422210162011	422210162031



Lasfittingen T-Stukken



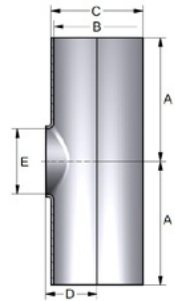
T-Stuk Kort

DN	A	B	C	Artikel 304 Blank	Artikel 316 Blank
DN10	26.0	10.0	13.0	422101301510	422101301530
DN15	35.0	16.0	19.0	422101901510	422101901530
DN20	40.0	20.0	23.0	422102301510	422102301530
DN25	50.0	26.0	29.0	422102901511	422102901531
DN32	55.0	32.0	35.0	422103501511	422103501531
DN40	60.0	38.0	41.0	422104101511	422104101531
DN50	70.0	50.0	53.0	422105301511	422105301531
DN65	80.0	66.0	70.0	422107002011	422107002031
DN80	90.0	81.0	85.0	422108502011	422108502031
DN100	100.0	100.0	104.0	422110402011	422110402031
DN125	187.5	125.0	129.0	422112902010	422112902030
DN150	225.0	150.0	154.0	422115402010	422115402030
DN200	300.0	200.0	204.0	422120402010	422120402030
DN250	375.0	250.0	254.0	422125402010	422125402030

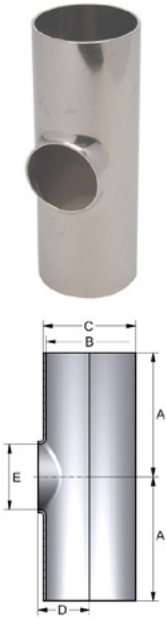
DN	A	B	C	Artikel 304 Blank - Ra 0,8	Artikel 316 Blank - Ra 0,8
1"	44.0	22.2	25.4	422102541611	422102541631
1½"	64.0	34.9	38.1	422103811611	422103811631
2"	89.0	47.6	50.8	422105081611	422105081631
2½"	114.0	60.3	63.5	422106351611	422106351631
3"	134.0	72.9	76.1	422107611611	422107611631
4"	174.0	97.6	101.6	422110162011	422110162031

Kort Reducerend

DN	A	B	C	D	E	Artikel 316
DN15-DN10	35.0	16.0	19.0	11.5	10.0	422701901331
DN20-DN10	40.0	20.0	23.0	13.0	10.0	422702301330
DN20-DN15	40.0	20.0	23.0	14.5	16.0	422702301931
DN25-DN10	50.0	26.0	29.0	16.0	10.0	422702901331
DN25-DN15	50.0	26.0	29.0	16.0	16.0	422702901931
DN25-DN20	50.0	26.0	29.0	16.0	20.0	422702902331
DN32-DN15	55.0	32.0	35.0	19.5	16.0	422703501931
DN32-DN20	55.0	32.0	35.0	19.0	20.0	422703502331
DN32-DN25	55.0	32.0	35.0	19.0	26.0	422703502931
DN40-DN10	60.0	38.0	41.0	22.0	10.0	422704101331
DN40-DN15	60.0	38.0	41.0	22.0	16.0	422704101931
DN40-DN20	60.0	38.0	41.0	22.0	20.0	422704102331
DN40-DN25	60.0	38.0	41.0	22.0	26.0	422704102931
DN40-DN32	60.0	37.0	40.0	23.0	31.0	422704003430
DN50-DN15	70.0	50.0	53.0	29.5	16.0	422705301931
DN50-DN20	70.0	50.0	53.0	29.5	20.0	422705302331
DN50-DN25	70.0	50.0	53.0	29.5	26.0	422705302931
DN50-DN32	70.0	50.0	53.0	29.5	32.0	422705303531
DN50-DN40	70.0	50.0	53.0	30.0	38.0	422705304130
DN65-DN25	80.0	66.0	70.0	40.0	26.0	422707002931
DN65-DN32	80.0	66.0	70.0	40.0	32.0	422707003531
DN65-DN40	80.0	66.0	70.0	40.0	38.0	422707004131
DN65-DN50	80.0	66.0	70.0	40.0	50.0	422707005331
DN80-DN25	90.0	81.0	85.0	47.5	26.0	422708502931
DN80-DN40	90.0	81.0	85.0	47.5	38.0	422708504131
DN80-DN50	90.0	81.0	85.0	47.5	50.0	422708505331
DN80-DN65	90.0	81.0	85.0	45.5	67.0	422708507031



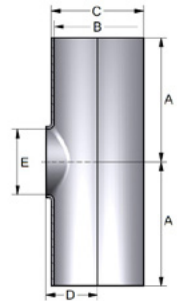
Lasfittingen T-Stukken

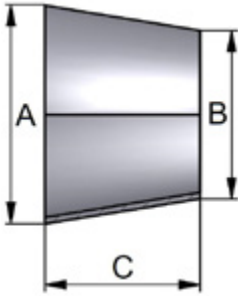


DN	A	B	C	D	E	Artikel 316
DN100-DN25	100.0	100.0	104.0	58.0	26.0	422710402931
DN100-DN32	100.0	100.0	104.0	58.0	32.0	422710403530
DN100-DN40	100.0	100.0	104.0	58.0	38.0	422710404131
DN100-DN50	100.0	100.0	104.0	58.0	50.0	422710405331
DN100-DN65	100.0	100.0	104.0	58.0	67.0	422710407031
DN100-DN80	100.0	100.0	104.0	58.0	81.0	422710408531
DN125-DN25	187.5	125.0	129.0	74.0	26.0	422712902931
DN125-DN40	187.5	125.0	129.0	74.0	38.0	422712904131
DN125-DN50	187.5	125.0	129.0	74.0	50.0	422712905331
DN125-DN65	187.5	125.0	129.0	74.0	67.0	422712907031
DN125-DN80	187.5	125.0	129.0	74.0	81.0	422712908531
DN125-DN100	187.5	125.0	129.0	74.0	104.0	422712910431
DN150-DN25	225.0	150.0	154.0	90.0	26.0	422715402931
DN150-DN40	225.0	150.0	154.0	90.0	38.0	422715404131
DN150-DN50	225.0	150.0	154.0	90.0	50.0	422715405331
DN150-DN65	225.0	150.0	154.0	90.0	67.0	422715407031
DN150-DN80	225.0	150.0	154.0	90.0	81.0	422715408531
DN150-DN100	225.0	150.0	154.0	90.0	100.0	422715410431
DN150-DN125	225.0	150.0	154.0	90.0	125.0	422715412931

Lasfittingen T-Stukken

DN	A	B	C	D	E	Artikel 316
1½"-1"	64.0	34.9	38.1	22.0	22.2	422703802531
2"-1"	89.0	47.6	50.8	29.0	22.2	422705002531
2"-1½"	89.0	47.6	50.8	29.0	34.9	422705003831
2½"-1"	114.0	60.3	63.5	35.0	22.2	422706302531
2½"-1½"	114.0	60.3	63.5	35.0	34.9	422706303831
2½"-2"	114.0	60.3	63.5	35.0	47.6	422706305031
3"-1"	134.0	72.9	76.1	41.0	22.2	422707602531
3"-1½"	134.0	72.9	76.1	41.0	34.9	422707603831
3"-2"	134.0	72.9	76.1	41.0	47.6	422707605031
3"-2½"	134.0	72.9	76.1	41.0	60.3	422707606331
4"-1"	174.0	97.6	101.6	55.0	22.2	422710102531
4"-1½"	174.0	97.6	101.6	55.0	34.9	422710103831
4"-2"	174.0	97.6	101.6	55.0	47.6	422710105031
4"-2½"	174.0	97.6	101.6	55.0	60.3	422710106331
4"-3"	174.0	97.6	101.6	55.0	72.9	422710107631



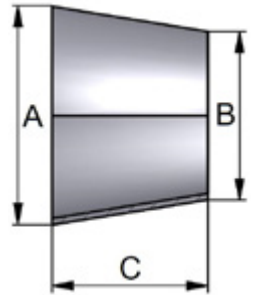


Concentrisch Lasverloop

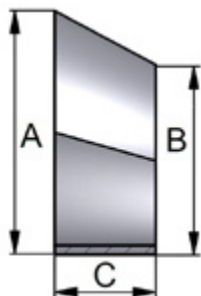
DN	A	B	C	Artikel 316
DN15-DN10	16.0	10.0	11.0	222101901330
DN20-DN10	23.0	13.0	18.0	222102301331
DN20-DN15	23.0	19.0	7.0	222102301931
DN25-DN10	29.0	13.0	30.5	222102901331
DN25-DN15	29.0	19.0	18.0	222102901931
DN25-DN20	29.0	23.0	11.5	222102902331
DN32-DN15	35.0	19.0	31.0	222103501931
DN32-DN20	35.0	23.0	22.0	222103502331
DN32-DN25	35.0	29.0	11.0	222103502931
DN40-DN15	41.0	19.0	42.5	222104101931
DN40-DN20	38.0	20.0	33.0	222104102330
DN40-DN25	41.0	29.0	22.4	222104102931
DN40-DN32	41.0	35.0	11.0	222104103531
DN50-DN25	53.0	29.0	44.8	222105302931
DN50-DN32	53.0	35.0	33.0	222105303531
DN50-DN40	53.0	41.0	22.4	222105304131
DN65-DN25	70.0	29.0	76.0	222107002931
DN65-DN32	70.0	35.0	63.5	222107003531
DN65-DN40	70.0	41.0	52.2	222107004131
DN65-DN50	70.0	53.0	29.9	222107005331
DN80-DN50	85.0	53.0	57.8	222108505331
DN80-DN65	85.0	70.0	27.0	222108507031
DN100-DN50	104.0	53.0	93.3	222110405331
DN100-DN65	104.0	70.0	63.4	222110407031
DN100-DN80	104.0	85.0	34.0	222110408531
DN125-DN65	129.0	70.0	110.1	222112907031
DN125-DN80	129.0	85.0	79.0	222112908531
DN125-DN100	129.0	104.0	46.7	222112910431
DN150-DN100	154.0	104.0	100.0	222115410431
DN150-DN125	150.0	125.0	45.0	222115412930
DN200-DN150	200.0	150.0	90.0	222120415430

Lasfittings Reduceerstukken

DN	A	B	C	Artikel 316 INCH
1½"-1"	38.1	25.4	37.6	222103802531
2"-1"	50.8	25.4	75.0	222105002531
2"-1½"	50.8	38.1	37.9	222105003831
2½"-1½"	63.5	38.1	77.6	222106303831
2½"-2"	63.5	50.8	38.2	222106305031
3"-1½"	76.1	38.1	72.0	222107603831
3"-2"	76.1	50.8	77.9	222107605031
3"-2½"	76.1	63.5	39.0	222107606331
4"-2"	101.6	50.8	96.1	222110105031
4"-2½"	101.6	63.5	105.0	222110106331
4"-3"	101.6	76.1	76.1	222110107631



Lasfittingen Reduceerstukken



Excentrisch Lasverloop

DN	A	B	C	Artikel 316
DN15-DN10	19.0	13.0	16.5	222201901330
DN20-DN15	23.0	19.0	11.0	222202301930
DN25-DN15	29.0	19.0	27.5	222202901930
DN25-DN20	29.0	23.0	16.5	222202902330
DN32-DN20	35.0	23.0	33.0	222203502331
DN32-DN25	35.0	29.0	16.5	222203502931
DN40-DN25	41.0	29.0	34.0	222204102931
DN40-DN32	38.0	32.0	16.5	222204103531
DN50-DN32	53.0	35.0	49.5	222205303531
DN50-DN40	53.0	41.0	33.0	222205304131
DN65-DN40	70.0	41.0	76.9	222207004131
DN65-DN50	70.0	53.0	44.0	222207005331
DN80-DN50	85.0	53.0	85.2	222208505331
DN80-DN65	85.0	70.0	41.2	222208507031
DN100-DN65	104.0	70.0	94.8	222210407031
DN100-DN80	104.0	85.0	49.4	222210408531
DN125-DN100	129.0	104.0	68.5	222212910430
DN150-DN100	154.0	104.0	137.0	222215410431
DN150-DN125	154.0	129.0	68.5	222215412930

DN	A	B	C	Artikel 316 INCH
1½"-1"	38.1	25.4	36.6	222203802531
2"-1"	50.8	25.4	73.2	222205002531
2"-1½"	50.8	38.1	38.6	222205003831
2½"-1½"	63.5	38.1	75.7	222206303831
2½"-2"	63.5	50.8	38.0	222206305031
3"-1½"	76.1	38.1	115.0	222207603831
3"-2"	76.1	50.8	75.8	222207605031
3"-2½"	76.1	63.5	38.7	222207606331
4"-2½"	101.6	63.5	103.0	222210106331
4"-3"	101.6	76.1	73.8	222210107631

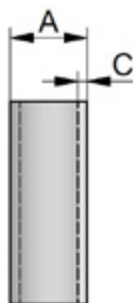
Buis

Zuivelbuis 124



Buis
Zuivelbuis

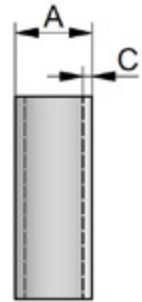
Zuivelbuis Plus



DIN DN	A	C	Artikel 316 Blank	Artikel 304 Blank
19.0	19.0	1.5	800801901504M	800801901502M
23.0	23.0	1.5	800802301504M	800802301502M
29.0	29.0	1.5	800802901504M	800802901502M
29.0	29.0	1.5	800802901504L	800802901502M
35.0	35.0	1.5	800803501504M	800803501502M
35.0	35.0	1.5	800803501504L	800803501502M
41.0	41.0	1.5	800804101504M	800804101502M
41.0	41.0	1.5	800804101504L	800804101502M
53.0	53.0	1.5	800805301504M	800805301502M
53.0	53.0	1.5	800805301504L	800805301502M
70.0	70.0	2.0	800807002004M	800807002002M
70.0	70.0	2.0	800807002004L	800807002002M
85.0	85.0	2.0	800808502004M	800808502002M
85.0	85.0	2.0	800808502004L	800808502002M
104.0	104.0	2.0	800810402004M	800810402002M
104.0	104.0	2.0	800810402004L	800810402002M
129.0	129.0	2.0	800812902004M	800812902002M
154.0	154.0	2.0	800615402004M	800615402002M
204.0	204.0	2.0	800620402004M	800620402002M

Buis Zuivelbuis

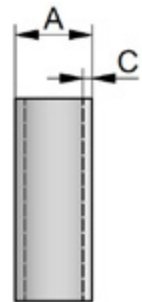
DIN DN	A	C	Artikel 316 Geslepen	Artikel 304 Geslepen
19.0	19.0	1.5	800901901504M	800901901502M
23.0	23.0	1.5	800902301504M	800902301502M
29.0	29.0	1.5	800902901504M	800902901502M
35.0	35.0	1.5	800903501504M	800903501502M
41.0	41.0	1.5	800904101504M	800904101502M
53.0	53.0	1.5	800905301504M	800905301502M
70.0	70.0	2.0	800907002004M	800907002002M
85.0	85.0	2.0	800908502004M	800908502002M
104.0	104.0	2.0	800910402004M	800910402002M



INCH DN	A	C	Artikel 316 Blank	Artikel 304 Blank
25.4	25.4	1.25	800802541254M	800802541252M
38.1	38.1	1.5	800803811504M	800803811502M
50.8	50.8	1.5	800805081504M	800805081502M
63.5	63.5	1.5	800806351504M	800806351502M
101.6	101.6	2.0	800810162004M	800810162002M



INCH DN	A	C	Artikel 316 Geslepen	Artikel 304 Geslepen
25.4	25.4	1.25	800902541254M	800902541252M
38.1	38.1	1.5	800903811504M	800903811502M
50.8	50.8	1.5	800905081504M	800905081502M
63.5	63.5	1.5	800906351504M	800906351502M
76.1	76.1	1.6	800907611604M	800907611602M
101.6	101.6	2.0	800910162004M	800910162002M





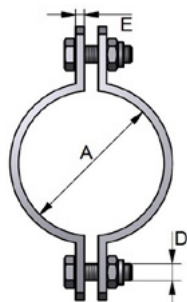
Montage toebehoren

Pijpbeugels 128



MQ-Line zonder stift

Pijpbeugelset zonder stift

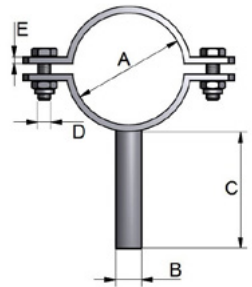


A	D	E	Artikel 304
12~14	M8	20 x 3	720900131
17~19	M8	20 x 3	720900191
21~23	M8	20 x 4	720900231
25~27	M8	20 x 4	720900251
28~29	M8	20 x 4	720900291
33~35	M8	20 x 4	720900351
38	M8	20 x 4	720900381
40~42	M8	20 x 4	720900421
48	M8	20 x 4	720900481
51~54	M8	20 x 4	720900531
60~64	M8	20 x 4	720900631
70~73	M8	20 x 4	720900701
76	M8	20 x 4	720900761
85	M8	25 x 4	720900851
89	M8	25 x 4	720900891
101~104	M8	25 x 4	720901041
114	M8	25 x 4	720901141
129	M12	30 x 4	720901291
139~142	M12	30 x 4	720901401
154	M12	30 x 4	720901541
168	M12	30 x 4	720901681
204	M12	30 x 4	720902041

MQ-Line met stift

Pijpbeugelset met stift

A	B	C	D	E	Artikel 304
12~14	8	55	M8	20 x 3	720900131S
17~19	8	55	M8	20 x 3	720900191S
21~23	8	55	M8	20 x 4	720900231S
25~27	8	55	M8	20 x 4	720900251S
28~29	8	55	M8	20 x 4	720900291S
33~35	10	55	M8	20 x 4	720900351S
38	10	55	M8	20 x 4	720900381S
40~42	10	55	M8	20 x 4	720900421S
48	10	55	M8	20 x 4	720900481S
51~54	12	55	M8	20 x 4	720900531S
60~64	12	55	M8	20 x 4	720900631S
70~73	12	55	M8 </td <td>20 x 4</td> <td>720900701S</td>	20 x 4	720900701S
76	12	55	M8	20 x 4	720900761S
85	12	55	M8	25 x 4	720900851S
89	12	55	M8	25 x 4	720900891S
101~104	12	55	M8	25 x 4	720901041S
114	12	60	M8	25 x 4	720901141S
129	12	60	M12	30 x 4	720901291S
139~142	12	60	M12	30 x 4	720901401S
154	16	60	M12	30 x 4	720901541S
168	16	60	M12	30 x 4	720901681S
204	16	60	M12	30 x 4	720902041S





montakom
RVS SPECIALISTEN







Montakon | Titaniumlaan 120 | 5221 CL 's-Hertogenbosch | Nederland
+31 (0)73 599 6000 | info@montakon.nl

2024