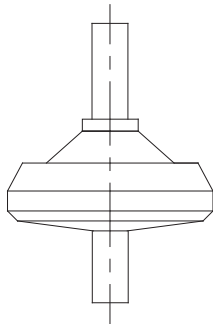
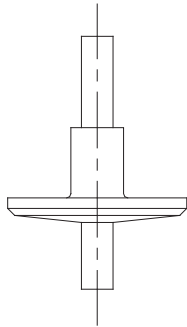
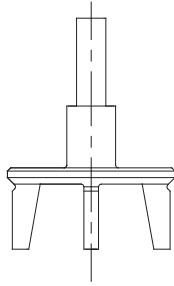


RÜCKSCHLAGVENTIL NON RETURN VALVE



ERSATZTEILE FÜR DIN UND SMS SPAREPARTS FOR DIN AND SMS

4-fach geführte metallische Tellerdichtung 4-way controlled metallic disk seal

DN			Typ Type
25	25	1"	25SD621A
40	38	1,5"	38-40SD621A
50			50D621A
65			65D621A
80			80D621A

Für Typen Rückschlagventile: XXD61A / XXD62A / XXS62A
For types of non return valves: XXD61A / XXD62A / XXS62A

1-fach geführte metallische Tellerdichtung 1-way controlled metallic disk seal

DN			Typ Type
	51	2"	51S621B
	63	2,5"	63S621B
	76	3"	76S621B
	102	4"	102S621B

Für Typ Rückschlagventil: XXS62B
For type of non return valve: XXS62B

1-fach geführte Teflontellerdichtung 1-way controlled teflon disk seal

DN			Typ Type
	51	2"	51S621C
	63	2,5"	63S621C
	76	3"	76S621C

Für Typ Rückschlagventil: XXS62C
For type of non return valve: XXS62C

Feder, zylindrisch Spring, cylindrical

DN			Typ Type
25	25	1"	25SD603B
40	38	1,5"	38-40SD603B
50	51	2"	50-51SD603B
65	63	2,5"	63-65SD603B
80	76	3"	76-80SD603B
	102	4"	102S603B

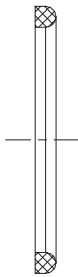
Für Typen Rückschlagventile: XXD61A / XXD62A / XXS62A / XX62B
For types of non return valves: XXD61A / XXD62A / XXS62A / XX62B

Feder, konisch Spring, conical

DN			Typ Type
	51	2"	51S622C
	63	2,5"	63S622C
	76	3"	76S622C

Für Typ Rückschlagventil: XXS62C
For type of non return valve: XXS62C

RÜCKSCHLAGVENTIL NON RETURN VALVE



Dichtring, DIN 11851-G, oben und unten Upper and bottom seal ring DIN 11851-G

DN		Typ Type	
		EPDM	FPM (Viton®)
25		25D01003-E	25D01003-V
40		40D01003-E	40D01003-V
50		50D01003-E	50D01003-V
65		65D01003-E	65D01003-V
80		80D01003-E	80D01003-V

Für Typen Rückschlagventile: XXD61A / XXD62A
For types of non return valves: XXD61A / XXD62A



Dichtring NBR bzw. EPDM, oben Upper seal ring NBR resp. EPDM

DN			Typ Type
25	25	1"	25SD623-N
40	38	1,5"	38-40SD623-N
50	51	2"	50-51SD623-N
65	63	2,5"	63-65SD623-N
	76	3"	76S623-N
	102	4"	102S31004-E

Für Typen Rückschlagventile: XXD61A / XXD62A / XXS62A / XXS62B / XXS63C
For types of non return valves: XXD61A / XXD62A / XXS62A / XXS62B / XXS63C



Dichtring, SMS 1145, unten Bottom seal ring, SMS 1145

DN		Typ Type	
		EPDM	FPM (Viton®)
25	1"	25S31004-E	25S31004-V
38	1,5"	38S31004-E	38S31004-V
51	2"	51S31004-E	51S31004-V
76	3"	76S31004-E	76S31004-V
102	4"	102S31004-E	102S31004-V

Für Typen Rückschlagventile: XXS62A / XXS62B / XXS63C
For types of non return valves: XXS62A / XXS62B / XXS63C

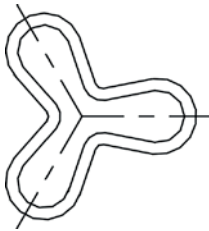
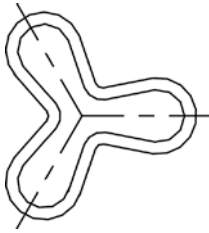


Dichtring NBR, unten Bottom seal ring NBR

DN		Typ Type
63	2,5"	63S623-N

Für Typen Rückschlagventile: 63S62B / 63S62C
For type of non return valve: 63S62B / 63S62C

RÜCKSCHLAGVENTIL NON RETURN VALVE



Führungsring oben Upper guiding ring

DN			Typ Type
25	25	1"	25SD601Y
40	38	1,5"	38-40SD601Y
50	51	2"	50-51SD601Y
65	63	2,5"	63-65SD601Y
80	76	3"	76-80SD601Y
	102	4"	102S601Y

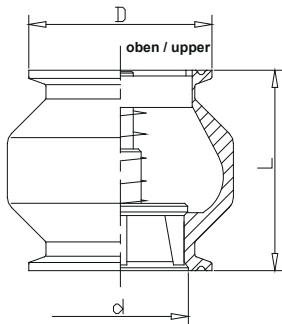
Für Typen Rückschlagventile: XXD61A / XXD62A / XXS62A / XXS62B / XXS62C
For types of non return valves: XXD61A / XXD62A / XXS62A / XXS62B / XXS62C

Führungsring unten Bottom guiding ring

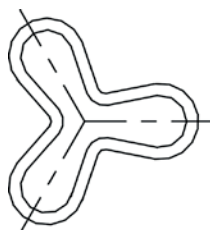
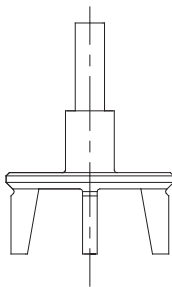
DN			Typ Type
	51	2"	51S601A
	63	2,5"	63S601A
	76	3"	76S601A
	102	4"	102S601A

Für Typen Rückschlagventile: XXS62B / XXS62C
For types of non return valves: XXS62B / XXS62C

RÜCKSCHLAGVENTIL NON RETURN VALVE



4-fach geführte metallische Tellerdichtung
4-way controlled metallic disc seal



TC-CLAMP

Rückschlagventil, 2x TC-Clamp Non return valve, 2x TC-Clamp

DN	Typ Type	Ø d	Ø D	L	p [bar]
1"	25C63A	22,2	50,5	60	0,18
1,5"	38C63A	34,9	50,5	62	0,12
2"	51C63A	47,5	64	70	0,08
2,5"	63C63A	60,2	77,5	80	0,05
3"	76C63A	72,9	91	90	0,05
4"	102C63A	97,6	119	138	0,05

ERSATZTEILE FÜR TC-CLAMP SPAREPARTS FOR TC-CLAMP

4-fach geführte metallische Tellerdichtung 4-way controlled metallic disk seal

DN	Typ Type
1"	25SD621A
1,5"	38C632A
2"	51C632A
2,5"	63C632A
3"	76C632A
4"	102C632A

Feder, zylindrisch Spring, cylindric

DN	Typ Type
1"	25SD603B
1,5"	38-40SD603B
2"	50-51SD603B
2,5"	63-65SD603B
3"	76-80SD603B
4"	102S603B

Führungsring oben Upper guiding ring

DN	Typ Type
1"	25SD601Y
1,5"	38C633A
2"	51C633A
2,5"	63C633A
3"	76C633A
4"	102C633A